

BLAIR CORPORATION

Cable Railing Specialist

sports arenas ■ churches ■ office buildings ■ entertainment venues



Table of Contents

Cable Rail Recommendations	3
Invisiware Receiver & Swaging Stud	4
Pull Locks	6
Radius Ferrule; Adjust-A-Body w/ Threaded Bolt	7
Adjust-A-Jaw Tensioner	8
Fixed Jaw	9
Adjust-A-Body w/ Threaded Clevis	10
Push Lock Threaded Clevis; Push Lock Turnbuckle Threaded Bolt	11
Push Lock Tensioner w/ Threaded Clevis	12
Push Lock Tensioner w/Threaded Bolt; Push Lock Threaded Bolt	13
Push Lock Lag; Push Lock Tensioner w/ Hanger Bolt	14
Push Lock Tensioner w/ Lag Clevis; Push Lock Lag Clevis	15
Adjust-A-Body w/ Hanger Bolt	16
Adjust-A-Body w/ Lag Clevis	17
Push Lock Turnbuckle w/ Hanger Bolt	18
Push Lock Stud w/Invisiware	19
Pro-Line Termination Adjuster	20
Pro-Line Relief Stud	21
Pro-Line Termination End	23
Toggle & Swage Turnbuckle; Toggle Swage	25
Swage & Swage Turnbuckle	27
Deck Toggle & Swage Turnbuckle; Swage Deck Toggle	28
Rod & Swage Turnbuckle; Lag & Swage Turnbuckle	29
Threaded Stud	30
Angle Balls; Ball Ends	31
Flat Stops; Dome Nuts	32
Field Installation	34
Threaded Tab; Isolation End Post Bushings; Cable Bushings	35
Grommets	36
Beveled Washers	37
Bronze Cable	38
Black Oxide Cable	39
Webnet Stainless Steel Cable Mesh	40
Trellis	43
Vertical Cables	46
Stainless Steel Tension Rods	47
Custom Railing Kits & Parts	49
Cable Nets	50
Post Drilling Capabilities	51
Drilling Services	52

BLAIR CORPORATION

Order Now
832-928-9655
www.blairwirerope.com

Blair Corporation

26797 Hanna Rd. BLD 2, Suite 2 • Oak Ridge North TX 77385
Phone 832-928-9655 • Fax 480-275-3356
www.blairwirerope.com



Thanks For Considering Our Products.

Blair Corporation began in our garage and has grown into a successful business by focusing on quality work and craftsmanship.

In 1999, we began as a supplier of high performance wire ropes for the heavy equipment and crane rental industry. In April of that year, we expanded into stainless steel cables for hand rails (Cable Rail), and moved our fabrication area from the garage into our own shop for a larger, more productive, work area.

We have a wide variety of Cable Rail products including the three constructions of stainless steel cable used in Cable Rail (1x19, 7x7, and 7x19). **The most commonly used of the three is 1x19.** We also sell termination end fittings. We have the capability to manufacture our own products, fabricate the cables to specified lengths, package, and ship throughout the U.S., Canada, and Mexico. If required, we can install the cables on projects within the state of Texas once all hand rails have been installed.

Our goal is to provide our customers with the highest quality of products and services possible, from the first phone call to the last cable being tightened. We have had the good fortune of providing cables for backyard decks to the biggest **sports arenas, churches, office buildings, and casinos** being built.

At Blair Corporation we look forward to having the opportunity to help you with all your cable rail needs. Feel free to contact us anytime at **832-928-9655**, fax 480-275-3356, or email Jack Blair at jack@theblaircompanies.com.

CABLE RAIL RECOMMENDATIONS

Hole Diameters: Before drilling any holes, decide on cable size, termination fittings, and if you are using grommets for your holes.

Termination fittings and grommets are very important, as they will determine the diameter of the holes in your posts.

Other factors to consider that affect hole size involve the constructions of the cable assemblies.

- Are you swaging both ends of the cables?
- Are you using a pull lock/quick connect on one end and swaging the other end?

All these factors together will decide the diameter of the holes.

Confirm the hardware and the hole sizes with the architect, customer, and the owner of the property once the diameter of the cable and fittings have been determined.

Note: If using termination fittings that connect from the outside of the termination post, confirm the hole size on the inside of the termination posts. This can make a difference to the architect or owner.

Clearance: If you will be using termination fittings that connect from the outside of the termination post (pass thru the termination post), you

will need enough clearance to install the termination fitting.

You will want to pay specific attention to instances when the termination posts are up against a wall or another post.

We recommend 3-1/2" of clearance to allow the installation of hardware and tools to tension the cables.

Posts: We recommend using 2"x 2" square tube with a 1/4" wall for the termination posts; and a 2"x1" for the top rail.

For pipe rail construction, we recommend schedule 80 pipe for both the termination posts and top rail.

Termination posts will need to be able to support 400 lbs. of tension per cable. If not, the termination post will deflect inwards under the tension of the cables.

We recommend intermediate posts being spaced every 48 inches.

Cable spacing for the holes for cable rail: We recommend 3-1/8 inches apart.

Requirements are that a 4" sphere shall not pass through any portion of the railing.

- We do **NOT** recommend Flat Bars for termination posts
- We do **NOT** recommend 90 degree turns.
- We recommend double posts at the corners.

When terminating into the same corner post, the cables will need to be offset, unless terminating to the inside of the termination post.

Stairs: If the cables run at an angle, all holes need to be drilled at an angle. Beveled washers are required for termination fittings connecting to the outside of the post.

If connecting to the inside of the termination post, you will need hardware that will mount to the inside of the posts and will compensate for the angle. We provide this type of hardware.

We recommend using a 1"x19" construction type 316 stainless steel cable for cable rail.

We offer import, domestic, and domestic melt material. If you have a project that requires domestic components, confirm if it is domestic or domestic melt. This could make a difference on your project.

Domestic: Products are made in the US.

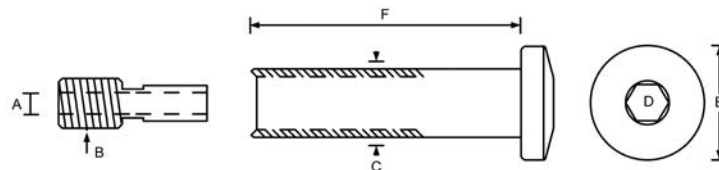
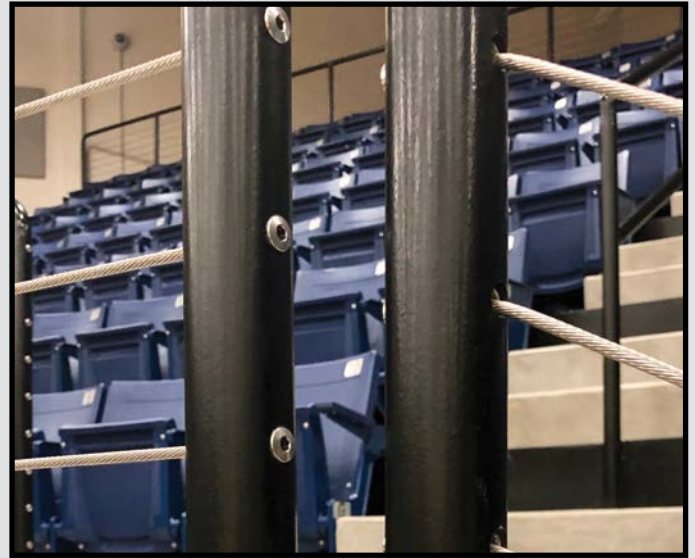
Domestic Melt: The raw materials to manufacture the products are sourced in the US.

Blair Corporation
26797 Hanna Rd. BLD 2, Suite 2 • Oak Ridge North TX 77385
Phone 832-928-9655 • Fax 480-275-3356
www.blairwirerope.com

Order Now
832-928-9655
www.blairwirerope.com

INVISIWARE RECEIVER & SWAGING STUD

Invisiware Receiver
With
Swaging Stud

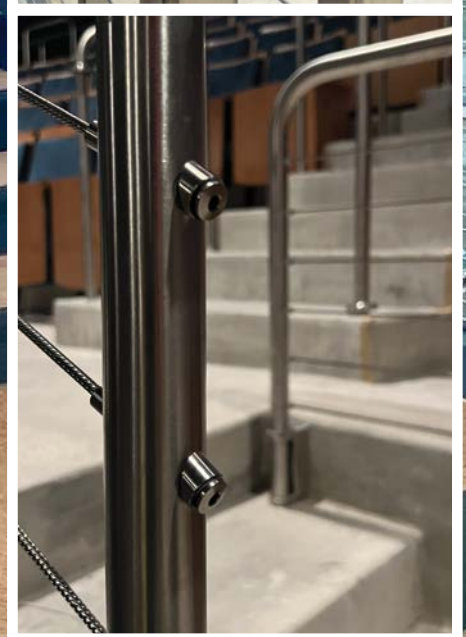
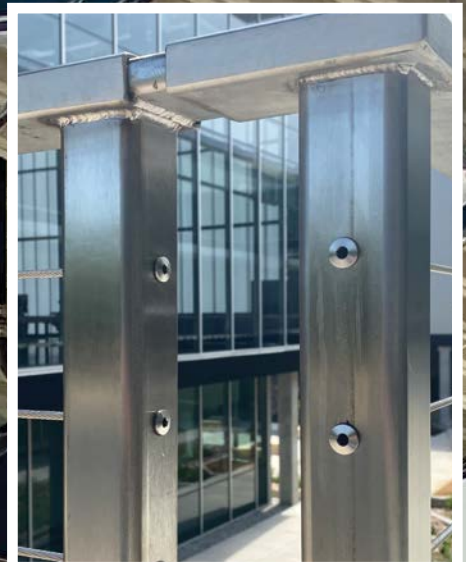


INVISIWARE RECEIVERS

SWAGING STUD			RECEIVER OPTIONS										
WIRE SIZE (A)	THREAD (B)	PART NUMBER	(C)	(D)	(E)	1-1/2" TUBE OR 1-1/4" PIPE (F) = 1.562	1-1/2" PIPE (F) = 1.812	2 x 2" TUBE (F) = 2.030	2" PIPE (F) = 2.301	2-3/8" TUBE (F) = 2.375	2-1/2" TUBE (F) = 2.530	3" TUBE (F) = 3.030	4x4 WOOD POST OR 3-1/2" TUBE (F) = 3.5625
1/8	5/16 - 24	18BC-S4	.437	3/16	.537	18BC-R612	18BC-R622	18BC-R632	18BC-R642	18BC-R672	18BC-R682	18BC-R652	18BC-R662
3/16	5/16 - 24	316BC-S6	.437	3/16	.537	316BC-R612	316BC-R622	316BC-R632	316BC-R642	316BC-R672	316BC-R682	316BC-R652	316BC-R662
1/4	7/16 - 20	14BC-S8	.531	7/32	.646	N.A.	14BC-R822	14BC-R832	14BC-R842	N.A.	N.A.	14BC-R852	N.A.
5/16	9/16 - 18	516BC-S10	.687	5/16	.865	N.A.	N.A.	516BC-R1232	516BC-R1242	N.A.	N.A.	516BC-R1252	N.A.
3/8	9/16 - 18	38BC-S12	.687	5/16	.865	N.A.	N.A.	38BC-R1232	38BC-R1242	N.A.	N.A.	38BC-R1252	N.A.



For a smooth and very sleek look, termination
ends can even be hidden in the posts.



Order Now
832-928-9655
www.blairwirerope.com

PULL LOCKS

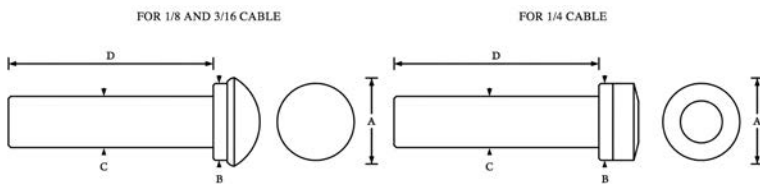
Pull Locks for 1/8 & 3/16 Cable



Pull Locks for 1/4 Cable



Pull Locks for 1/8 and 3/16 Cable



Pull Locks are a great option that can be installed in the field without swaging. You will need a Tensioning Fitting on the opposite end of the Cable from the Pull Lock. Pull Locks work great with Invisiware Receivers, [see page 4](#).

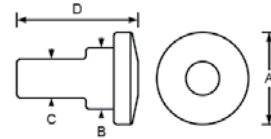
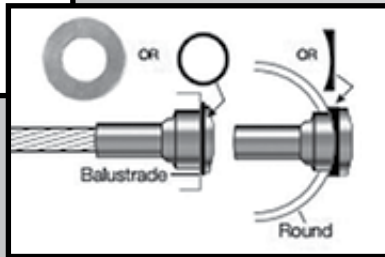
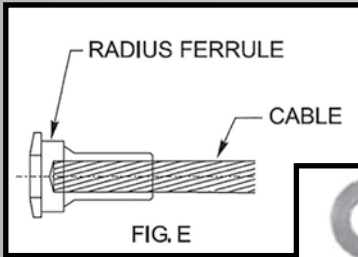
PULL LOCK

WIRE SIZE	(A) DIA.	(B) DIA.	(C) DIA.	(D) = 1.562 PART NO.	(D) = 1.810 PART NO.	(D) = 2.030 PART NO.	(D) = 2.300 PART NO.	(D) = 2.375 PART NO.	(D) = 2.530 PART NO.	(D) = 3.030 PART NO.
1/8	.625	.537	.432	18BC-PUL4-12	18BC-PUL4-1.810	18BC-PUL4-2.030	18BC-PUL4-2.300	18BC-PUL4-2.375	18BC-PUL4-2.530	18BC-PUL4-3.030
3/16	.625	.537	.432	316BC-PUL6-12	316BC-PUL6-1.810	316BC-PUL6-2.030	316BC-PUL6-2.300	316BC-PUL6-2.375	316BC-PUL6-2.530	316BC-PUL6-3.030
1/4	.646	.646	.531	N.A.	14BC-PUL8-22	14BC-PUL8-32	N.A.	N.A.	N.A.	14BC-PUL8-3.030

*All Hardware is Type 316 Stainless Steel

*Recommended that Cables are tensioned to 225 LBS

RADIUS FERRULE

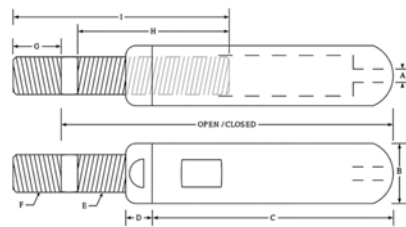
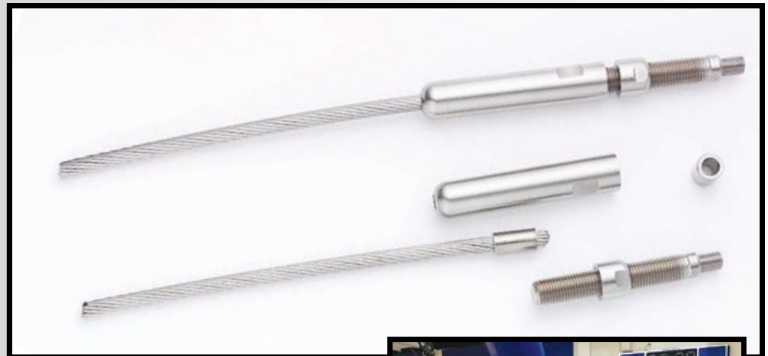


RADIUS FERRULE

WIRE SIZE	PART NO.	(A)	(B)	(C) DIAMETER AFTER SWAGE	(D) LENGTH AFTER SWAGE
1/8	18BC-RF4	.537	.437	.25	.75
3/16	316BC-RF6	.537	.437	.25	.75
1/4	14BC-RF8	.646	.531	.375	1
5/16	516BC-RF10	.865	.687	.5	1
3/8	38BC-RF12	.865	.687	.5	1

ADJUST-A-BODY WITH THREADED BOLT

Adjust-A-Body with Threaded Bolt & Invisiware Receiver



*Adjustment shown is the difference from open to close.

Recommend to center thread from open to close given equal adjustment in both directions. Typical negative adjustment when thread is centered is half of adjustment shown.

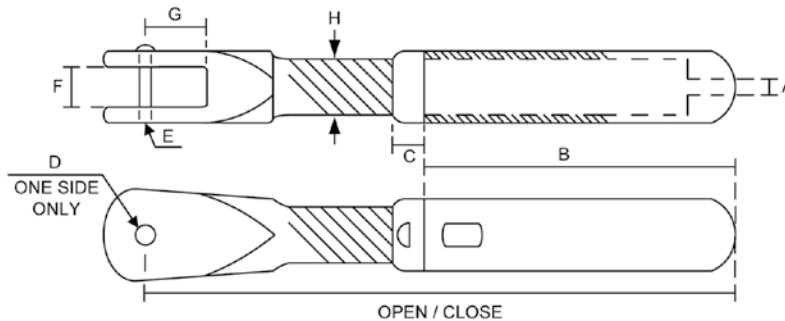


ADJUST-A-BODY with THREADED BOLT

(A) WIRE SIZE	PART NO.	USE WITH FERRULE NO.	(B)	(C)	(D)	(E)	(F) THREAD	(G)	(H)	(I)	OPEN	CLOSE	ADJUST-MENT
1/8	18BC-AJTB6	18BC-F4	.490	2.75	.375	5/16-24 LH	5/16-24 RH	0.375	2.00	2.625	4.5	3.125	1.375
3/16	316BC-AJTB6	316BC-F6	.490	2.75	.375	5/16-24 LH	5/16-24 RH	0.375	2.00	2.625	4.5	3.125	1.375
1/4	14BC-AJTB8	14BC-F8	.617	3.00	.500	7/16-20 LH	5/16-24 RH	0.375	2.50	3.125	5.25	3.5	1.75
5/16	516BC-AJTB12	516BC-F10	.744	4.50	.62	9/16-18 RH	1/2-20 RH	0.62	3.00	4.00	7.00	5.125	1.875
3/8	38BC-AJTB12	38BC-F12	.744	4.50	.62	9/16-18 RH	1/2-20 RH	0.62	3.00	4.00	7.00	5.125	1.875

ADJUST-A-JAW TURNBUCKLE

MUST BE FABRICATED & INSTALLED IN THE FIELD



ADJUST-A-JAW

WIRE SIZE (A)	PART NO.	USE WITH FERRULE NO.	USE WITH SCREW NO.	(B)	(C)	(D) DIA.	THREAD (E)	(F)	(G)	(H)	OPEN	CLOSE
1/8	18BC-AJ62	18BC-F4	18BC-SC6	2.75	.375	.260	1/4-28	0.260	0.56	5/16-24 LH	5.99	4.3
3/16	316BC-AJ62	316BC-F6	316BC-SC6	2.75	.375	.260	1/4-28	0.260	0.56	5/16-24 LH	5.99	4.3
1/4	14BC-AJ82	14BC-F8	14BC-SC8	3.00	.500	.390	3/8-24	0.313	0.75	7/16-20 LH	6.43	4.87
5/16	516BC-AJ122	516BC-F10	516BC-SC8	4.50	.620	.390	3/8-24	0.348	0.87	9/16-18 RH	9.28	6.74
3/8	38BC-AJ122	38BC-F12	38BC-SC8	4.50	.620	.390	3/8-24	0.348	0.87	9/16-18 RH	9.28	6.74

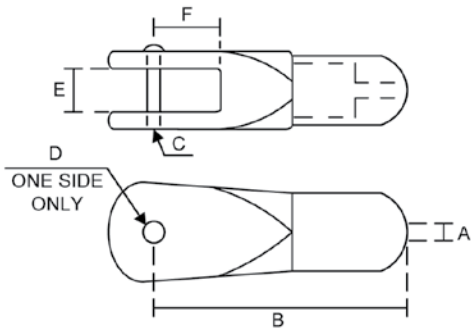


Not as big or as bulky as traditional jaw turnbuckles and jaw swages.

Order Now
832-928-9655
www.blairwirerope.com

FIXED JAW

MUST BE FABRICATED & INSTALLED IN THE FIELD



Fixed Jaws look and work great with Adjust-A-Jaw Turnbuckles, [see page 8](#).

FIXED JAW

WIRE SIZE (A)	PART NO.	USE WITH FERRULE NO.	USE WITH SCREW NO.	(B)	(C) THREAD	(D) DIA.	(E)	(F)
1/8	18BC-FJ62	18BC-F4	18BC-SC6	1.75	1/4-28	.260	.260	.56
3/16	316BC-FJ62	316BC-F6	316BC-SC6	1.75	1/4-28	.260	.260	.56
1/4	14BC-FJ82	14BC-F8	14BC-SC8	2.12	3/8-24	.390	.313	.75
5/16	516BC-FJ122	516BC-F10	516BC-SC8	2.25	3/8-24	.390	.348	.87
3/8	38BC-FJ122	38BC-F12	38BC-SC8	2.25	3/8-24	.390	.348	.87



Clip On Fixed Jaw



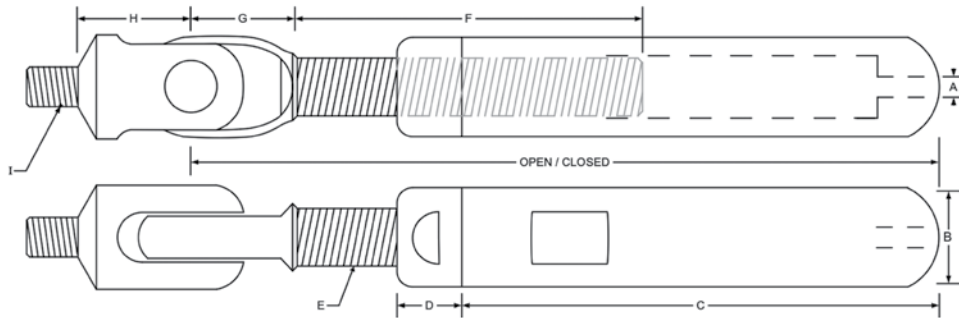
ADJUST-A-BODY WITH THREADED CLEVIS

ADJUST-A-BODY with THREADED CLEVIS



Goes well with the Push Lock Threaded Clevis as an alternative option for the opposite end.
[See page 11.](#)

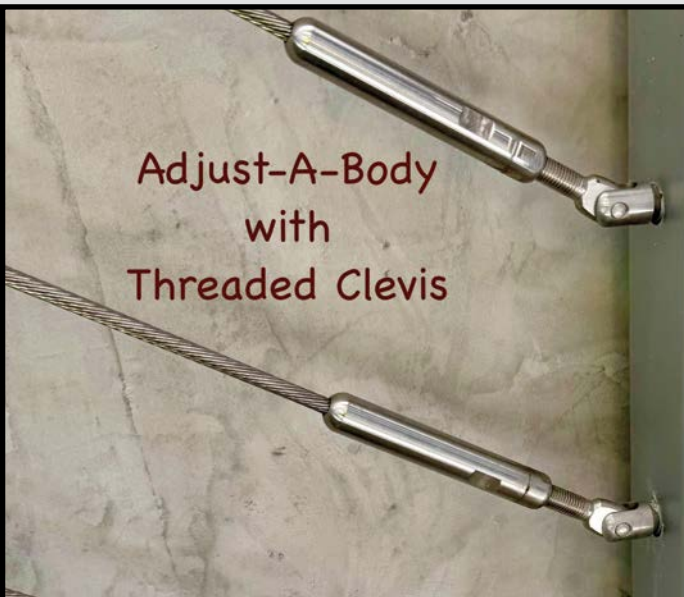
Order Now
832-928-9655
www.blairwirerope.com



ADJUST-A-BODY with THREADED CLEVIS

WIRE SIZE (A)	PART NO.	USE W/ FERRULE NO.	(B)	(C)	(D)	(E) THREADED	(F)	(G)	(H)	(I) THREAD	OPEN	CLOSE	ADJUST-MENT
1/8	18BC-AJ6-CL-M	18BC-F4	.490	2.75	.375	5/16-24 LH	2.00	.44	.55	5/16-24 RH	5	3.625	1.375
3/16	316BC-AJ6-CL-M	316BC-F6	.490	2.75	.375	5/16-24 LH	2.00	.44	.55	5/16-24 RH	5	3.625	1.375

Adjust-A-Body
with
Threaded Clevis

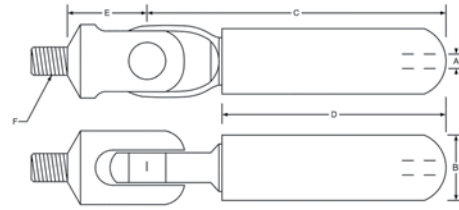


Adjust-A-Body
with
Threaded Clevis
&
Invisiware Receiver



PUSH LOCK THREADED CLEVIS

PUSH LOCK
THREADED CLEVIS



PUSH LOCK THREADED CLEVIS

WIRE SIZE (A)	PART NO.	(B)	(C)	(D)	(E)	(F) THREADED
1/8	18BC-PL- CL-RP-4	.43	2.08	1.56	.55	5/16-24
3/16	316BC-PL- CL-RP-6	.43	2.08	1.56	.55	5/16-24

Push Lock
Lock Threaded
Clevis

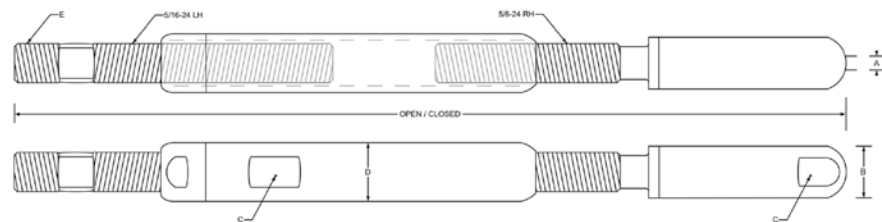
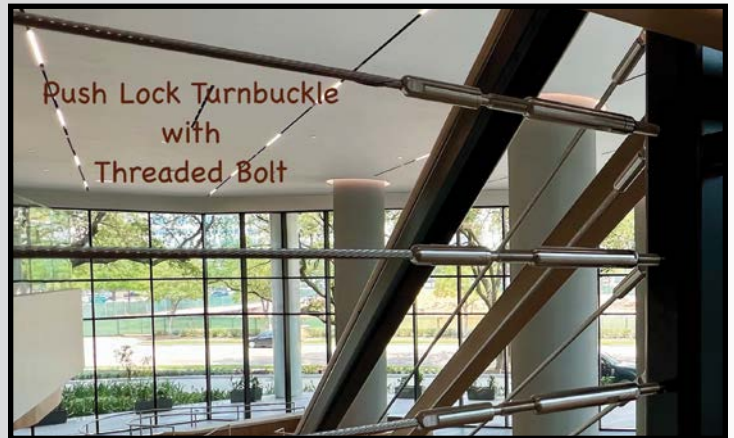


PUSH LOCK TURNBUCKLE WITH THREADED BOLT

Push Lock Turnbuckle
Threaded Bolt



Push Lock Turnbuckle
with
Threaded Bolt

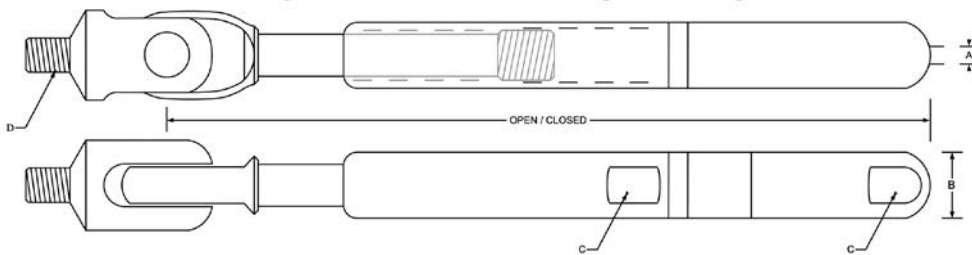


PUSH LOCK TURNBUCKLE THREADED BOLT

WIRE SIZE (A)	PART NO.	(B)	(C) WRENCH FLAT	(D)	(E) THREAD	OPEN APPROX.	CLOSE	ADJ. APPROX.
1/8	18BC-PL-TB-TB-4	.43	.375	.490	5/16-24 RH	7.625	5.4375	2.1875
3/16	316BC-PL-TB-TB-6	.43	.375	.490	5/16-24 RH	7.625	5.4375	2.1875

PUSH LOCK TENSIONER WITH THREADED CLEVIS

Push Lock Tensioner with Threaded Clevis



PUSH LOCK TENSIONER with THREADED CLEVIS

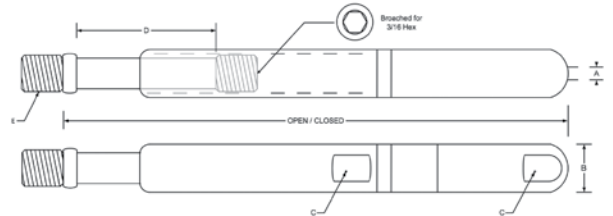
WIRE SIZE (A)	PART NO.	(B)	(C) WRENCH FLAT	(D) THREAD	OPEN	CLOSE	ADJUSTMENT
1/8	18BC-PL-SFC-MP-4	.43	.375	5/16-24	5.579	4.573	1.00
3/16	316BC-PL-SFC-MP-6	.43	.375	5/16-24	5.579	4.573	1.00

Order Now
832-928-9655
www.blairwirerope.com

Blair Corporation
26797 Hanna Rd. BLD 2, Suite 2 • Oak Ridge North TX 77385
Phone 832-928-9655 • Fax 480-275-3356
www.blairwirerope.com

PUSH LOCK TENSIONER WITH THREADED BOLT

Push Lock Tensioner with Threaded Bolt

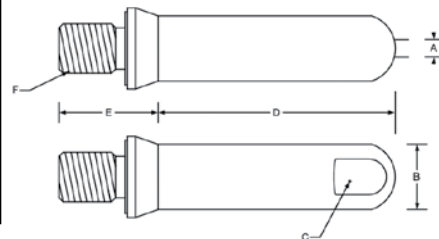


PUSH LOCK TENSIONER with THREADED BOLT

WIRE SIZE (A)	PART NO.	(B)	(C) WRENCH FLAT	(D)	(E) THREAD	OPEN	CLOSE	ADJUST- MENT
1/8	18BC-PL-SFC-MS-4	.43	.375	1.125	5/16-24	5.195	4.195	1.00
3/16	316BC-PL-SFC-MS-6	.43	.375	1.125	5/16-24	5.195	4.195	1.00

PUSH LOCK THREADED BOLT

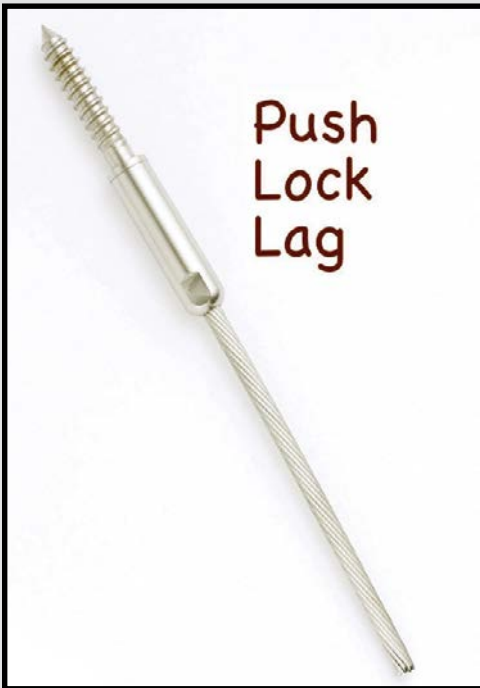
Push Lock Threaded Bolt



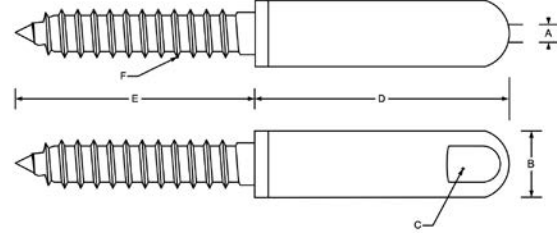
PUSH LOCK THREADED BOLT

WIRE SIZE (A)	PART NO.	(B)	(C) WRENCH FLAT	(D)	(E)	(F) THREAD
1/8	18BC-PL-FM-MS-4	.432	.375	1.56	.645	5/16-24
3/16	316BC-PL-FM-MS-6	.432	.375	1.56	.645	5/16-24

PUSH LOCK LAG



Push
Lock
Lag



PUSH LOCK LAG

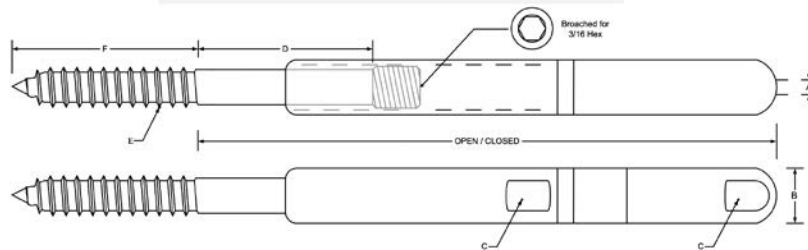
WIRE SIZE (A)	PART NO.	(B)	(C) WRENCH FLAT	(D)	(E)	(F) THREADED
1/8	18BC-PL-LAG-4	.43	.375	1.65	1.55	5/16-9
3/16	316BC-PL-LAG-6	.43	.379	1.65	1.55	5/16-9

PUSH LOCK TENSIONER WITH HANGER BOLT

Push Lock Tensioner
with
Hanger Bolt



Order Now
832-928-9655
www.blairwirerope.com

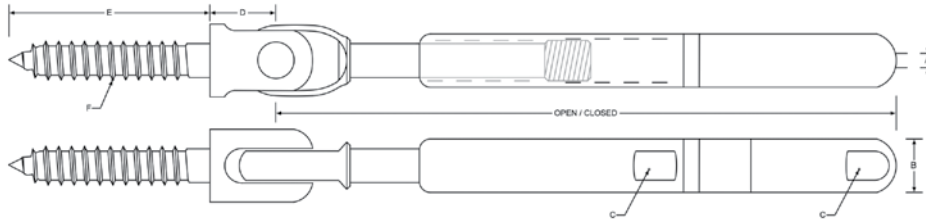


PUSH LOCK TENSIONER with HANGER BOLT

WIRE SIZE (A)	PART NO.	(B)	(C) WRENCH FLAT	(D)	(E)	(F)	OPEN	CLOSE	ADJUSTMENT
1/8	18BC-PL-SFC-WS-4	.43	.375	1.154	5/16-9	1.45	4.976	4.201	.775
3/16	316BC-PL-SFC-WS-6	.43	.375	1.154	5/16-9	1.45	4.976	4.201	.775

PUSH LOCK TENSIONER WITH LAG CLEVIS

Push Lock Tensioner
with Lag Clevis



PUSH LOCK TENSIONER with LAG CLEVIS

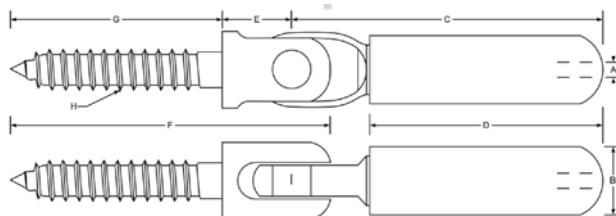
WIRE SIZE (A)	PART NO.	(B)	(C) WRENCH FLAT	(D)	(E)	(F) THREADED	OPEN	CLOSE	ADJUSTMENT
1/8	18BC-PL-SFC-WP-4-1	.43	.375	.55	1.55	5/16-9	5.579	4.573	1.00
3/16	316BC-PL-SFC-WP-6-1	.43	.375	.55	1.55	5/16-9	5.579	4.573	1.00

PUSH LOCK LAG CLEVIS

Push Lock
Lag Clevis



Order Now
832-928-9655
www.blairwirerope.com



PUSH LOCK LAG CLEVIS

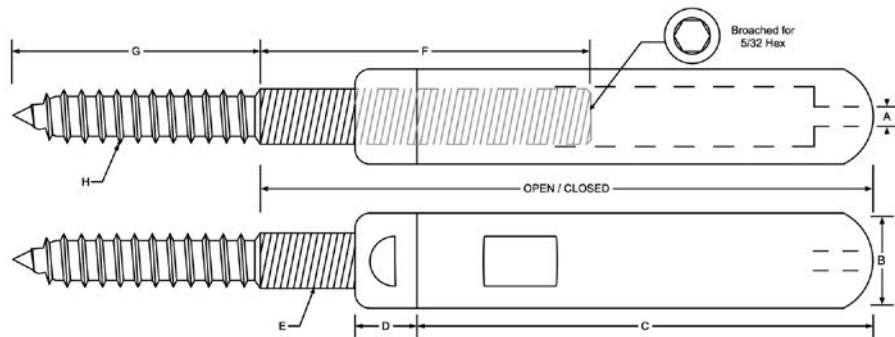
WIRE SIZE (A)	PART NO.	(B)	(C)	(D)	(E)	(F)	(G)	(H) THREADED
1/8	18BC-PL-LAG-CL-TE4-1	.43	2.08	1.56	.55	2.30	1.55	5/16-9
3/16	316BC-PL-LAG-CL-TE6-1	.43	2.08	1.56	.55	2.30	1.55	5/16-9

ADJUST-A-BODY WITH HANGER BOLT

Adjust-A-Body with Hanger Bolt



Order Now
832-928-9655
www.blairwirerope.com



ADJUST-A-BODY WITH HANGER BOLT

(A) WIRE SIZE	PART NO.	USE W/ FERRULE NO.	(B)	(C)	(D)	(E) THREAD	(F)	(G)	(H) THREAD	OPEN	CLOSE	APPROX. ADJUST-MENT
1/8	18BC-AJB6	18BC-F4	.490	2.75	.375	5/16-24 LH	2.00	1.50	5/16	4.5	3.125	1.375
3/16	316BC-AJB6	316BC-F6	.490	2.75	.375	5/16-24 LH	2.00	1.50	5/16	4.5	3.125	1.375
1/4	14BC-AJB8	14BC-F8	.617	3.00	.500	7/16-20 LH	2.50	2.00	7/16	5.25	3.5	1.75

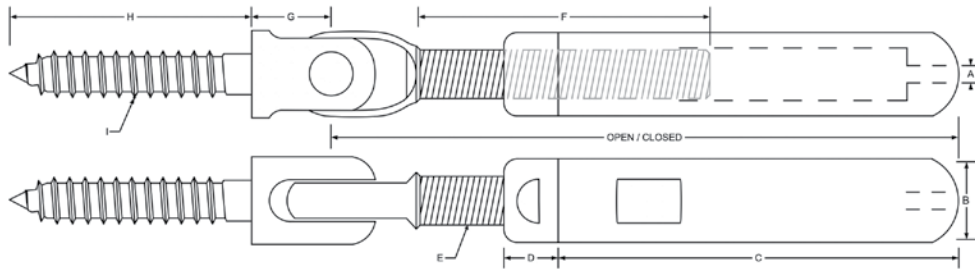
Blair Corporation
26797 Hanna Rd. BLD 2, Suite 2 • Oak Ridge North TX 77385
Phone 832-928-9655 • Fax 480-275-3356
www.blairwirerope.com

ADJUST-A-BODY WITH LAG CLEVIS

Adjust-A-Body with Lag Clevis



Order Now
832-928-9655
www.blairwirerope.com



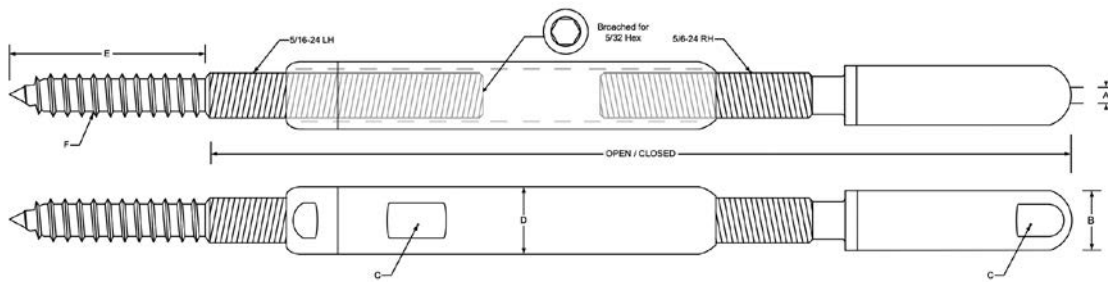
ADJUST-A-BODY WITH LAG CLEVIS

(A) WIRE SIZE	PART NO.	USE W/ FERRULE NO.	(B)	(C)	(D)	(E) THREAD	(F)	(G)	(H) THREAD	(I) THREAD	OPEN	CLOSE	ADJUST- MENT
1/8	18BC-AJ6-CL-W	18BC-F4	.490	2.75	.375	5/16-24 LH	2.00	.55	1.55	5/16-9	5	3.625	1.375
3/16	316BC-AJ6-CL-W	316BC-F6	.490	2.75	.375	5/16-24 LH	2.00	.55	1.55	5/16-9	5	3.625	1.375

Blair Corporation
26797 Hanna Rd. BLD 2, Suite 2 • Oak Ridge North TX 77385
Phone 832-928-9655 • Fax 480-275-3356
www.blairwirerope.com

PUSH LOCK TURNBUCKLE WITH HANGER BOLT

Push Lock Turnbuckle with Hanger Bolt



PUSH LOCK TURNBUCKLE WITH HANGER BOLT

(A) WIRE SIZE	PART NO.	(B)	(C) WRENCH FLAT	(D)	(E)	(F) THREAD	OPEN APPROX.	CLOSE	APPROX. ADJUSTMENT
1/8	18BC-PL-TB-HB-4	.43	.375	.490	1.5	5/16-9	7.6875	5.5625	2.125
3/16	316BC-PL-TB-HB-6	.43	.375	.490	1.5	5/16-9	7.6875	5.5625	2.125

Order Now
832-928-9655
www.blairwirerope.com

PUSH LOCK STUD WITH INVISIWARE RECEIVER

Push Lock Stud
with
Invisiware Receiver



Push Lock Stud
with
Invisiware Receiver



Push Lock Stud



Order Now
832-928-9655

www.blairwirerope.com



PUSH LOCK STUD

WIRE SIZE	THREAD	SWAGELESS STUD NO.	(A) = RECEIVER BODY LENGTH							
			1.562"	1.812"	2.030"	2.301"	2.375"	2.530"	3.030"	3.5625"
1/8	5/16 - 24	BC-PLST4	BC-R612	BC-R622	BC-R632	BC-R642	BC-R672	BC-R682	BC-R652	BC-R662
3/16	5/16 - 24	BC-PLST6								

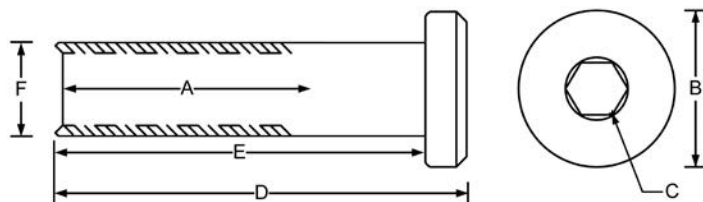
****DESIGNED TO BE USED WITH 1X19 L.H. LAY STRAND ONLY****

Blair Corporation
26797 Hanna Rd. BLD 2, Suite 2 • Oak Ridge North TX 77385
Phone 832-928-9655 • Fax 480-275-3356
www.blairwirerope.com

PRO-LINE SERIES: TERMINATION ADJUSTER



Order Now
832-928-9655
www.blairwirerope.com



PRO-LINE TERMINATION ADJUSTER

THREAD	THREAD LENGTH (A)	HEAD DIA. (B)	HEX (C)	OVERALL LENGTH (D)	(E)	DIA. (F)	POST HOLE SIZE	PART NO.
1/4 - 28	1.3125	.490	3/16	1.655	1.5	.312	3/8	1428BC-PHC
5/16-24	1.1875	.560	3/16	1.655	1.5	.370	7/16	51624BC-PHC

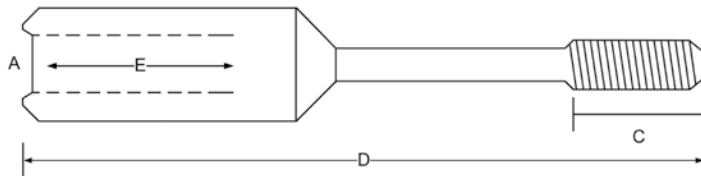
PRO-LINE SERIES: RELIEF STUD



Pro-Line Relief Stud



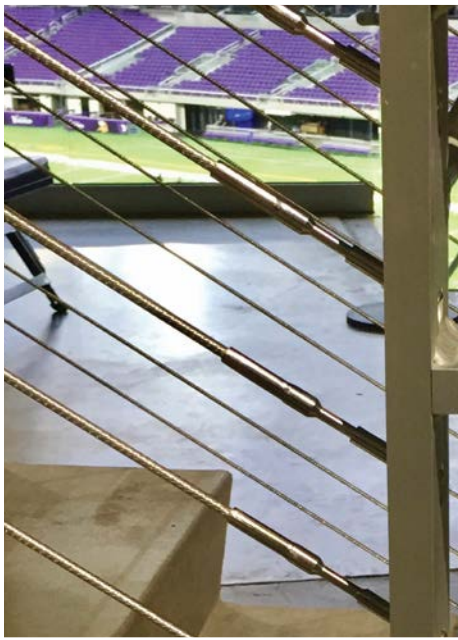
Pro-Line Relief Stud with Pro-Line Termination Adjuster



PRO LINE RELIEF STUD

WIRE SIZE (A)	THREAD LENGTH (B)	THREAD LENGTH (C)	OVERALL LENGTH (D)	HOLE DEPTH (E)	POST HOLE SIZE	PART NO.
1/8	1/4 - 28	1/2"	2 5/16"	7/8"	5/16"	18BC-PRS-1428
3/16	1/4 - 28	1/2"	2 7/8"	1 5/16"	3/8"	316BC-PRS-1428
1/4	5/16 - 24	1/2"	3 3/16"	1 5/8"	7/16"	14BC-PRS-51624

PRO-LINE SERIES: RELIEF STUD

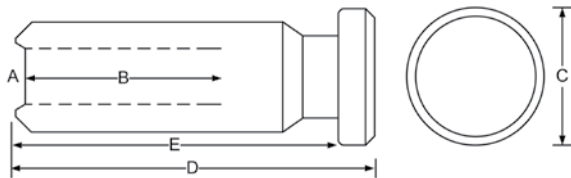


Blair Corporation
26797 Hanna Rd. BLD 2, Suite 2 • Oak Ridge North TX 77385
Phone 832-928-9655 • Fax 480-275-3356
www.blairwirerope.com

PRO-LINE SERIES: TERMINATION END



Order Now
832-928-9655
www.blairwirerope.com



PRO LINE TERMINATION STUD

WIRE SIZE (A)	HOLE DEPTH (B)	HEAD SIZE C	(D)	(E)	POST HOLE SIZE	PART NO.
1/8	.875	.490	1.705	1.5	5/16	18BC-PTE
3/16	1.125	.490	1.781	1.75	3/8	316BC-PTE
1/4	1.625	.560	2.520	2.3	29/64	14BC-PTE

Pro-Line Termination End has no adjustment for tensioning.



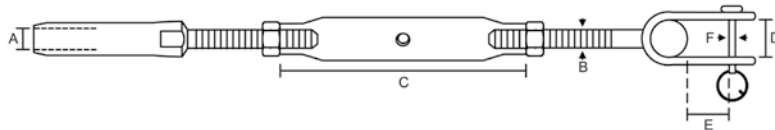
PRO-LINE SERIES: TERMINATION END



TOGGLE & SWAGE TURNBUCKLE



Used for connecting to the inside of your posts, and is adjustable to compensate for stairs and inclines.



TOGGLE AND SWAGE TURNBUCKLE

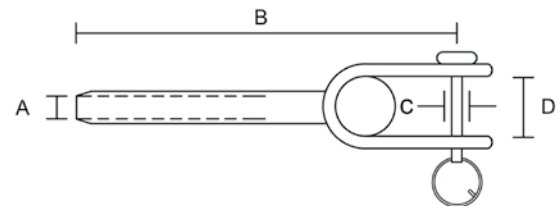
WIRE SIZE (A)	THREAD (B)	(C)	(D)	(E)	(F)	POST HOLE SIZE	PART NO.
1/8	1/4 - 20	3 3/4	0.40	0.96	0.23	5/16	18BC-TS-1420
3/16	1/4 - 20	3 3/4	0.40	0.96	0.23	7/16	316BC-TS-1420
1/4*	5/16 - 18	4 3/16	0.40	0.96	0.23	1/2	14BC-TSL-51618
1/4	5/16 - 18	4 3/16	0.40	0.96	0.23	9/16	14BC-TS-51618
5/16	1/2 - 13	6	0.53	1.20	0.46	11/16	516BC-TS-1213
3/8	5/8 - 11	7 5/8	0.76	1.50	0.63	3/4	38BC-TS-5811
1/2	3/4 - 10	8 3/4	.083	2.10	0.75	15/16	12BC-TS-3410

*LIFE LINE SWAGE STUDS; USE 7/32 DIE TO SWAGE • DIMENSIONS MAY VARY PER MANUFACTURE



Order Now
832-928-9655
www.blairwirerope.com

TOGGLE SWAGE

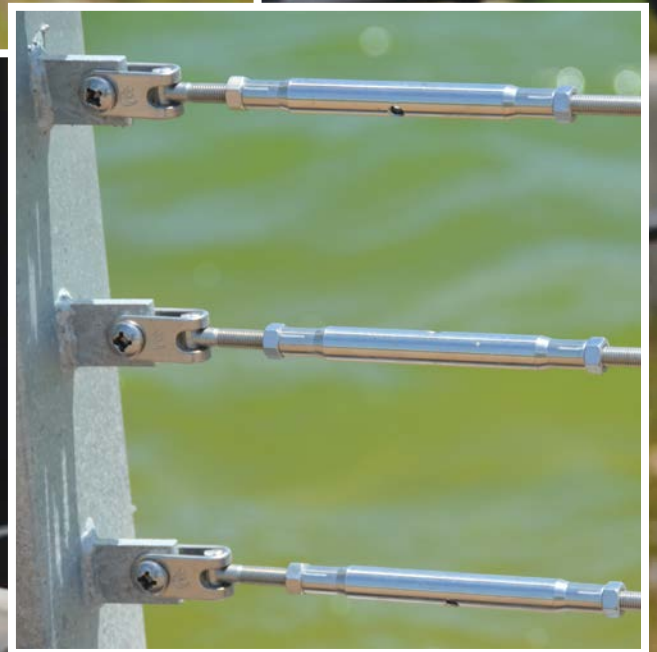
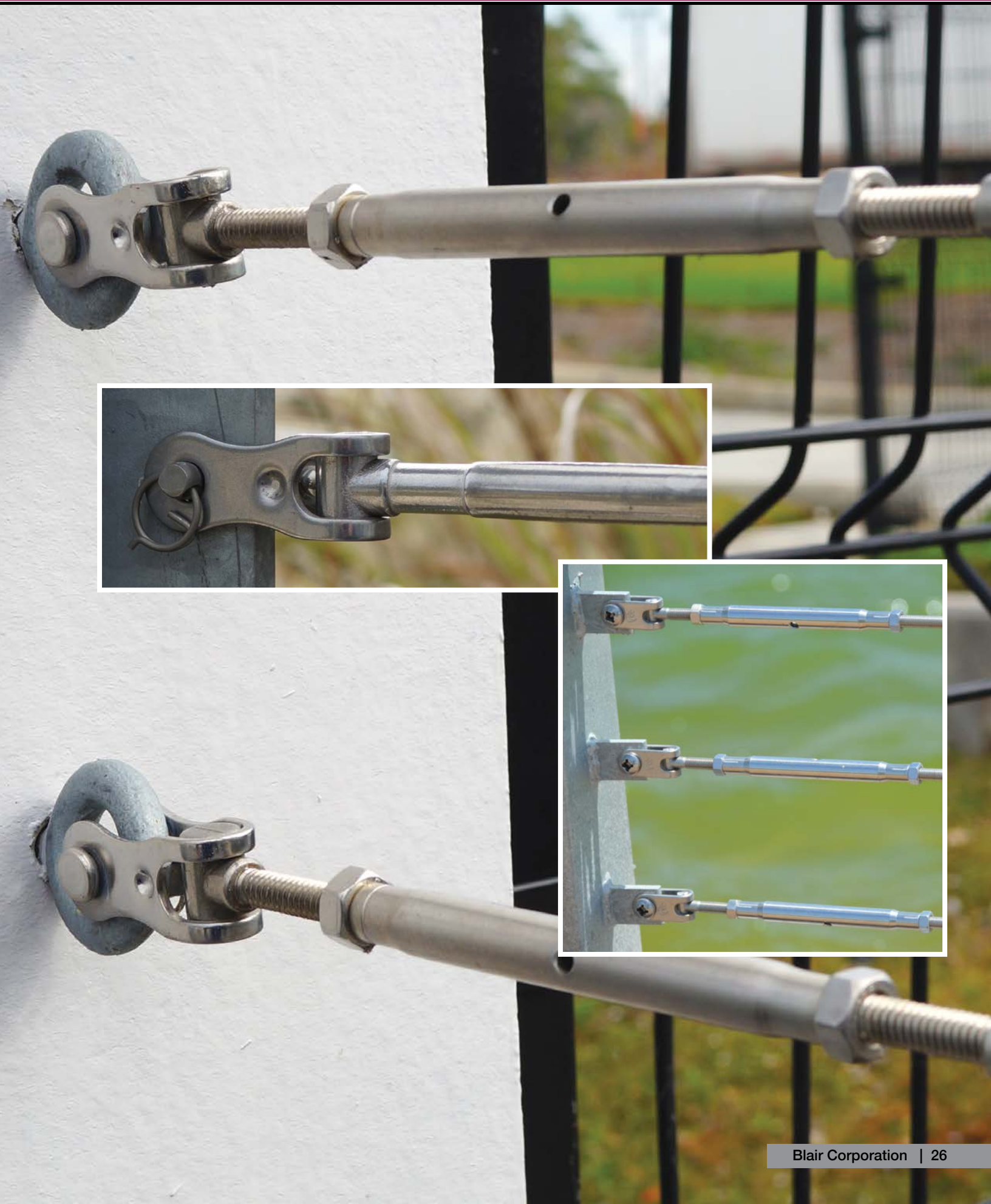


SWAGE TOGGLE

WIRE SIZE (A)	(B)	(C)	(D)	PART NO.
1/8	3	0.23	0.38	18BC-T
3/16	4 1/8	0.23	0.40	316BC-T
1/4	5	0.31	0.50	14BC-T
5/16	6 1/2	0.60	0.68	516BC-T
3/8	7 5/16	0.75	0.827	38BC-T
1/2	8	0.75	0.88	12BC-T

Blair Corporation
26797 Hanna Rd. BLD 2, Suite 2
Oak Ridge North TX 77385
Phone 832-928-9655
www.blairwirerope.com

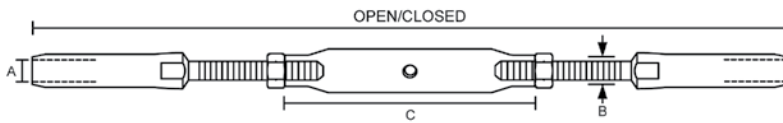
TOGGLE & SWAGE TURNBUCKLE WITH TOGGLE SWAGE



SWAGE AND SWAGE TURNBUCKLE



Recommended on long cable spans, this turnbuckle will eliminate sagging and help keep the cable tight.



SWAGE AND SWAGE TURNBUCKLE

WIRE SIZE (A)	THREAD (B)	(C)	OPEN	CLOSED	POST HOLE SIZE	PART NO.
1/8	1/4 - 20	3 3/4	11 3/4	8 1/4	5/16	18BC-SS-1420
3/16	1/4 - 20	3 3/4	12 3/4	9 1/4	7/16	316BC-SS-1420
1/4*	5/16 - 18	4 3/16	13 11/16	9 5/16	1/2	14BC-SSL-51618
1/4	5/16 - 18	4 3/16	15 3/16	11 1/16	9/16	14BC-SS-51618
5/16	1/2 - 13	6	20 5/8	14 7/8	11/16	516BC-SS-1213
3/8	5/8 - 11	7 5/8	24 7/8	17 1/2	3/4	38BC-SS-5811
1/2	3/4 - 10	8 3/8	28 3/8	20 3/8	15/16	12BC-SS-3410

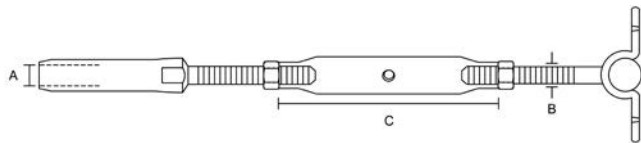
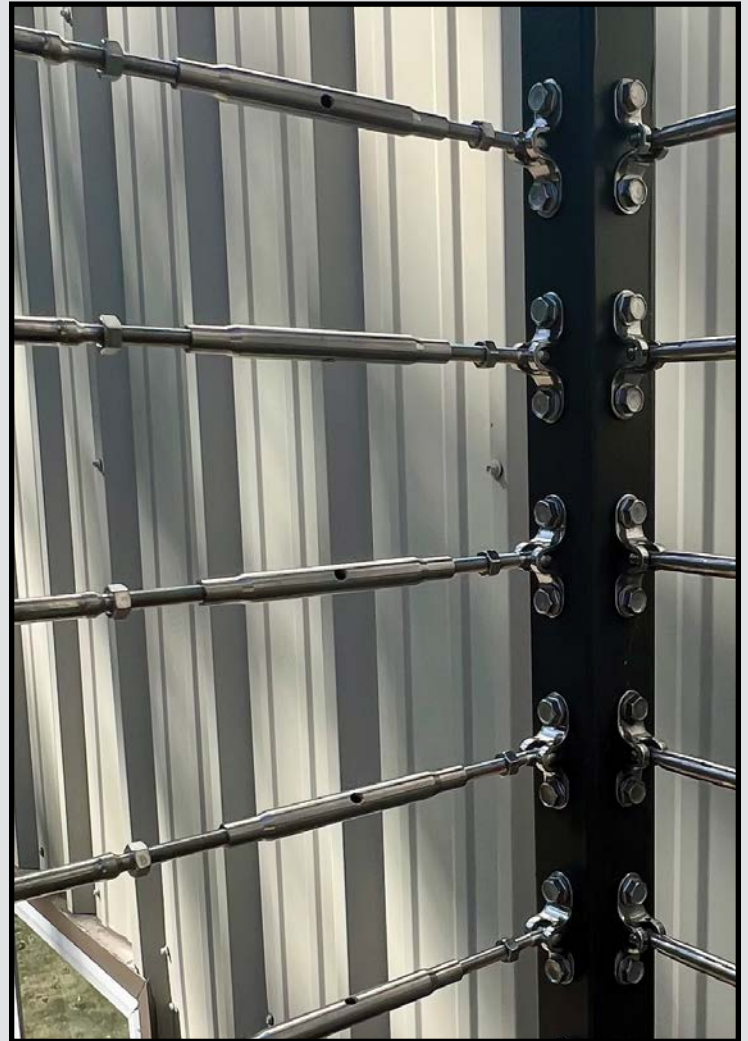
*LIFE LINE SWAGE STUDS; USE 7/32 DIE TO SWAGE
· DIMENSIONS MAY VARY PER MANUFACTURE



Blair Corporation
26797 Hanna Rd. BLD 2, Suite 2 • Oak Ridge North TX 77385
Phone 832-928-9655 • Fax 480-275-3356
www.blairwirerope.com

Order Now
832-928-9655
www.blairwirerope.com

DECK TOGGLE & SWAGE TURNBUCKLE

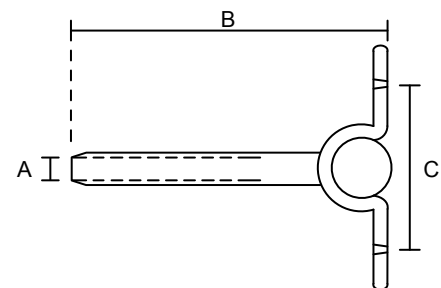


DECK TOGGLE AND SWAGE TURNBUCKLE

WIRE SIZE (A)	THREAD (B)	(C)	POST HOLE SIZE	PART NO.
1/8	1/4 - 20	3 3/4	5/16	18BC-DTS-1420
3/16	1/4 - 20	3 3/4	7/16	316BC-DTS-1420
1/4*	5/16 - 18	4 3/16	1/2	14BC-DTSL-51618
1/4	5/16 - 18	4 3/16	9/16	14BC-DTS-51618

*LIFE LINE SWAGE STUDS; USE 7/32 DIE TO SWAGE.
DIMENSIONS MAY VARY PER MANUFACTURE

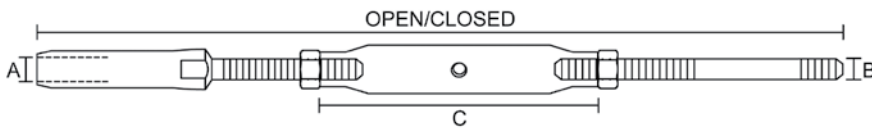
SWAGE DECK TOGGLE



SWAGE DECK TOGGLE

WIRE SIZE (A)	(B)	(C)	PART NO.
1/8	3	1.30	18BC-DT
3/16	3 3/4	1.30	316BC-DT
1/4	5	1.56	14BC-DT

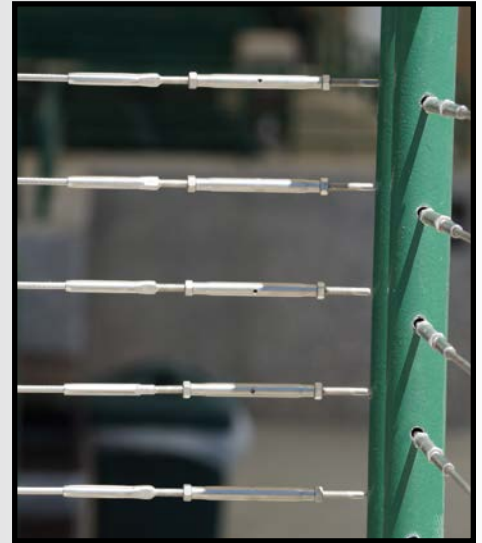
ROD & SWAGE TURNBUCKLE



ROD AND SWAGE TURNBUCKLE

WIRE SIZE (A)	THREAD (B)	(C)	OPEN	CLOSED	POST HOLE SIZE	PART NO.
1/8	1/4 - 20	3 3/4	12 1/4	8 3/4	5/16	18BC-RS-1420
3/16	1/4 - 20	3 3/4	12 3/4	9 3/4	7/16	316BC-RS-1420
1/4*	5/16 - 18	4 3/16	14	9 13/16	1/2	14BC-RSL-51618
1/4	5/16 - 18	4 3/16	14 3/4	10 3/4	9/16	14BC-RS-51618
5/16	1/2 - 13	6	20 5/16	14 7/8	11/16	516BC-RS-1213
3/8	5/8 - 11	7 5/8	24 3/4	17 3/4	3/4	38BC-RS-5811

*LIFE LINE SWAGE STUDS; USE 7/32 DIE TO SWAGE
• DIMENSIONS MAY VARY PER MANUFACTURE

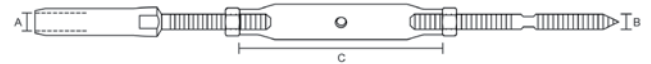


Rod & Swage Turnbuckle is the most commonly used Turnbuckle

LAG & SWAGE TURNBUCKLE



Lag & Swage Turnbuckle is used on wooden posts, most common on Decks



LAG AND SWAGE TURNBUCKLE

WIRE SIZE (A)	THREAD (B)	(C)	POST HOLE SIZE	PART NO.
1/8	1/4 - 20	3 3/4	5/16	18BC-LS-1420
3/16	1/4 - 20	3 3/4	7/16	316BC-LS-1420
1/4*	5/16 - 18	4 3/16	1/2	14BC-LSL-51618
1/4	5/16 - 18	4 3/16	9/16	14BC-LS-51618

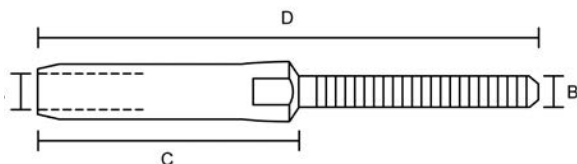
*LIFE LINE SWAGE STUDS; USE 7/32 DIE TO SWAGE
• DIMENSIONS MAY VARY PER MANUFACTURE

THREADED STUD



Threaded Swage Stud

Threaded Swage Studs, work excellently opposite end from Turnbuckles, or on short spans when they can be used on each end. Looks great with Flat Stops, Ball Ends, or Acorn Nuts.



SWAGE STUD

WIRE SIZE (A)	THREAD (B)	(C)	(D)	POST HOLE SIZE	PART NO.	PART NO. LEFT HANDED
1/8	1/4 - 20	2	4	5/16	18BC-S-1420	18BC-SL-1420
3/16	1/4 - 20	2 1/2	4 1/2	7/16	316BC-S-1420	316BC-SL-1420
1/4*	5/16 - 18	3 1/8	5 1/2	1/2	14BC-LL-S-51618	14BC-LL-SL-51618
1/4	5/16 - 18	3 1/8	5 1/2	9/16	14BC-S-51618	14BC-SL-51618
5/16	1/2 - 13	4	7 5/16	11/16	516BC-S-1213	516BC-SL-1213
3/8	5/8 - 11	4 3/8	8 5/8	3/4	38BC-S-5811	38BC-SL-5811
1/2	3/4 - 10	5 1/4	10	15/16	12BC-S-3410	12BC-SL-3410

*LIFE LINE SWAGE STUDS; USE 7/32 DIE TO SWAGE
DIMENSIONS MAY VARY PER MANUFACTURE NOTE: MORE SIZES AVAILABLE



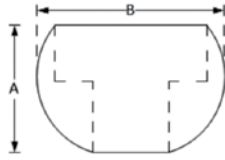
Order Now
832-928-9655
www.blairwirerope.com

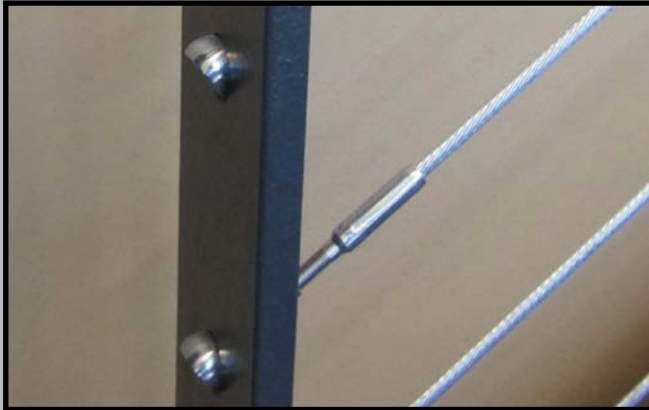
Blair Corporation
26797 Hanna Rd. BLD 2, Suite 2 • Oak Ridge North TX 77385
Phone 832-928-9655 • Fax 480-275-3356
www.blairwirerope.com

ANGLE BALLS

FOR STAIRS OR INCLINES USED WITH PRO-LINE SERIES



					
PRO LINE ANGLE BALL					
HEX CAP SIZE	(A)	(B)	END POST HOLE SIZE	CENTER POST HOLE SIZE	PART NO.
1/4 - 28	7/16"	.75	18MM	3/8"	1428BC-PAB
*NOTE: USE WITH PRO LINE STUDS ONLY					



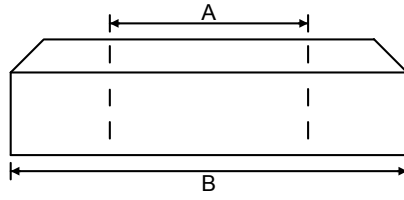
BALL ENDS



BALL END		
THREAD	TYPE	PART NO.
3/16 - 24	RH	31624BC-BER
3/16 - 24	LH	31624BC-BEL
1/4 - 20	RH	1420BC-BER
1/4 - 20	LH	1420BC-BEL
1/4 - 28	RH	1428BC-BER
1/4 - 28	LH	1428BC-BEL
5/16 - 18	RH	51618BC-BER
5/16 - 18	LH	51618BC-BEL
5/16 - 24	RH	51624BC-BER
5/16 - 24	LH	51624BC-BEL
3/8 - 16	RH	3816BC-BER
3/8 - 16	LH	3816BC-BEL
3/8 - 24	RH	3824BC-BER
3/8 - 24	LH	3824BC-BEL

* MORE SIZES AVAILABLE

FLAT STOPS



FLAT STOP			
THREAD (A)	OD (B)	TYPE	PART NO.
1/4 - 20	5/8"	RH	1420BC-FSR
1/4 - 20	5/8"	LH	1420BC-FSL
5/16 - 18	1 1/16"	RH	51618BC-FSR
5/16 - 18	1 1/16"	LH	51618BC-FSL



DOVE NUTS

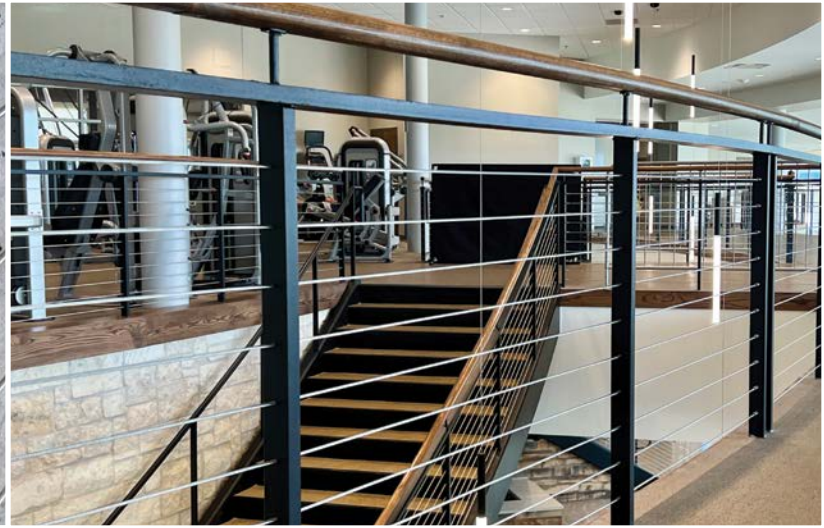
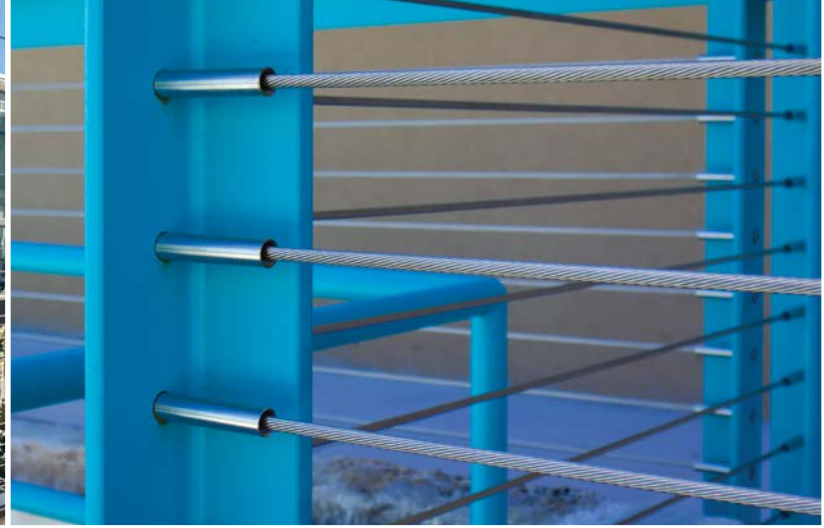
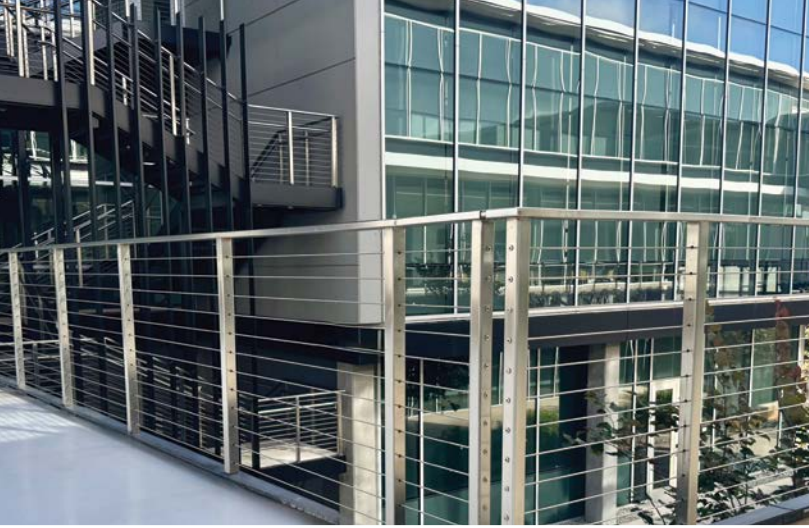


DOVE NUT		
THREAD	TYPE	PART NO.
3/16 - 24	RH	31624BC-DNR
3/16 - 24	LH	31624BC-DNL
1/4 - 20	RH	1420BC-DNR
1/4 - 20	LH	1420BC-DNL
1/4 - 28	RH	1428BC-DNR
1/4 - 28	LH	1428BC-DNL
5/16 - 18	RH	51618BC-DNR
5/16 - 18	LH	51618BC-DNL
5/16 - 24	RH	51624BC-DNR
5/16 - 24	LH	51624BC-DNL
3/8 - 16	RH	3816BC-DNR
3/8 - 16	LH	3816BC-DNL
3/8 - 24	RH	3824BC-DNR
3/8 - 24	LH	3824BC-DNL

* MORE SIZES AVAILABLE



Order Now
832-928-9655
www.blairwirerope.com



FIELD INSTALLATION

WITHIN THE STATE OF TEXAS



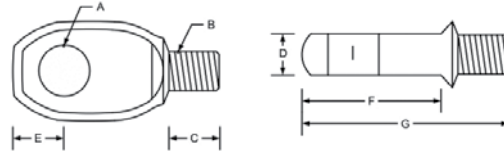
Order Now
832-928-9655
www.blairwirerope.com



Blair Corporation
26797 Hanna Rd. BLD 2, Suite 2 • Oak Ridge North TX 77385
Phone 832-928-9655 • Fax 480-275-3356
www.blairwirerope.com

THREADED TAB

Threaded Tab



THREADED TAB

WIRE SIZE (A)	PART NO.	(A)	(B)	(C)	(D)	(E)	(F)	(G)
1/8, 3/16	BC-TT6B	.256	5/16-24	.500	.232	.330	.780	1.30
1/4, 5/16, 3/8	BC-TT8B	.393	5/16-24	.375	.290	.410	1.100	1.66

ISOLATION END POST BUSHINGS

Isolation End Post Bushings are placed over termination fittings to help prevent bimetallic corrosion. This is used on Invisiware and Pull Locks for 1/8 & 3/16 cable. Only available in black.



*Used with Invisiware Receivers and Pull-Lock fittings for 1/8" & 3/16" cable

ISOLATION BUSHING*

I.D.	O.D.	POST HOLE SIZE	PART #
0.437	0.562	9/16" (.5625)	BC-ISB

CABLE BUSHINGS

Cable Bushings provide a barrier between the cable and the post material which helps reduce cable vibrations. Nylon post bushings are for installation into your intermediate posts after cable installation. These bushings are available in black, silver, and white.

*Post will need to be drilled at a 31° pitch for angled bushing to be installed properly into post.



SPLIT NYLON BUSHING

USE W/ CABLE DIA.	I.D.	O.D.	POST HOLE SIZE	COLOR	PART NO.	PART # ANGLED FOR 29° - 33° PITCH*
1/8"	4mm	9mm	23/64	Black	18BC-SB-B	18BC-SBA-B
				Silver	18BC-SB-S	18BC-SBA-S
				White	18BC-SB-W	18BC-SBA-W
3/16"	6mm	10mm	25/64	Black	316BC-SB-B	316BC-SBA-B
				Silver	316BC-SB-S	316BC-SBA-S
				White	316BC-SB-W	316BC-SBA-W
1/4"	6mm	10mm	25/64	Black	14BC-SB-B	14BC-SBA-B
				Silver	14BC-SB-S	14BC-SBA-S
				White	14BC-SB-W	14BC-SBA-W

GROMMETS

Intermediate Post and Cable Brace Grommets are available for 1/8, 3/16, and 1/4 cable. They help prevent rust in exterior applications or where moisture is a factor. They are only available in black.



Order Now
832-928-9655
www.blairwirerope.com

Intermediate Post and Cable Brace Grommets

FOR LEVEL RUNS

CABLE DIAM.	INTERMEDIATE POST MATERIAL					POST HOLE SIZE*
	SCHEDULE 40 1-1/4" 1-1/2" 2" PIPE	SQ. OR RECT. TUBE WITH .120" WALL	SCHEDULE 80 1-1/4" 1-1/2" 2" PIPE	1/4" CABLE BRACE OR SQ. OR RECT. TUBE WITH .250 WALL	1/2" FLAT BAR	
1/8"	G-C6-1	G-C6-2	G-C6-3	G-C6-4	G-C6-.500	1/4" (.250")
3/16"						
1/4"	G-C8-1	G-C8-2	G-C8-3	G-C8-4	NA	5/16" (.312")

*Note: Grommets will not install properly in under or over-sized holes. Hole size are actual sizes AFTER finish is applied.

STAIRWAY OR SLOPED RUNS UP TO 37° PITCH

CABLE DIAM.	INTERMEDIATE POST MATERIAL			POST HOLE SIZE*	
	SCHEDULE 40 1-1/4" 1-1/2" 2" PIPE	SQ. OR RECT. TUBE WITH .120" WALL	SQ. OR RECT. TUBE WITH .250" WALL	(A)	(B)
1/8"	G-C6-1	GI-C6-2	GI-C6-4	1/4" (.250")	7/16" (.438)
3/16"					
1/4"	G-C8-1	GI-C8-2	GI-C8-4	5/16" (.312")	1/2" (.500)

*Note: Grommets will not install properly in under or over-sized holes. Hole size are actual sizes AFTER finish is applied.

End Post Grommets

END POST USING RADIUS FERRULE, PUSH-LOCK, OR PULL-LOCK FITTINGS FOR LEVEL RUNS

CABLE DIAM.	POST MATERIAL		
	SCHEDULE 80 1-1/4", 1-1/2", OR 2" PIPE	SQ. OR RECT. TUBE WITH .250" WALL	POST HOLE SIZE*
1/8" & 3/16"	G-C6-3	G-C6-4	1/4" (.250")
1/4"	G-C8-3	G-C8-4	5/16" (.312")

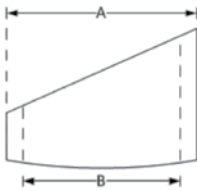
*Note: Cable grommets not required for fittings that extend through both walls of post frame.

BEVELED WASHERS



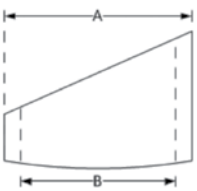
BEVELED WASHERS FOR INVISIWARE RECEIVERS

USE WITH CABLE DIAMETER	STAIR / SLOP PITCH	PART NO.
1/8" OR 3/16"	30° - 33°	BCBW32-6
1/8" OR 3/16"	34° - 36°	BCBW35-6
1/8" OR 3/16"	37° - 39°	BCBW38-6
1/4"	30° - 33°	BCBW32-8
1/4"	34° - 36°	BCBW35-8
1/4"	37° - 39°	BCBW38-8
5/16" OR 3/8"	30° - 33°	BCBW32-12
5/16" OR 3/8"	34° - 36°	BCBW35-12
5/16" OR 3/8"	37° - 39°	BCBW38-12



BEVELED WASHER

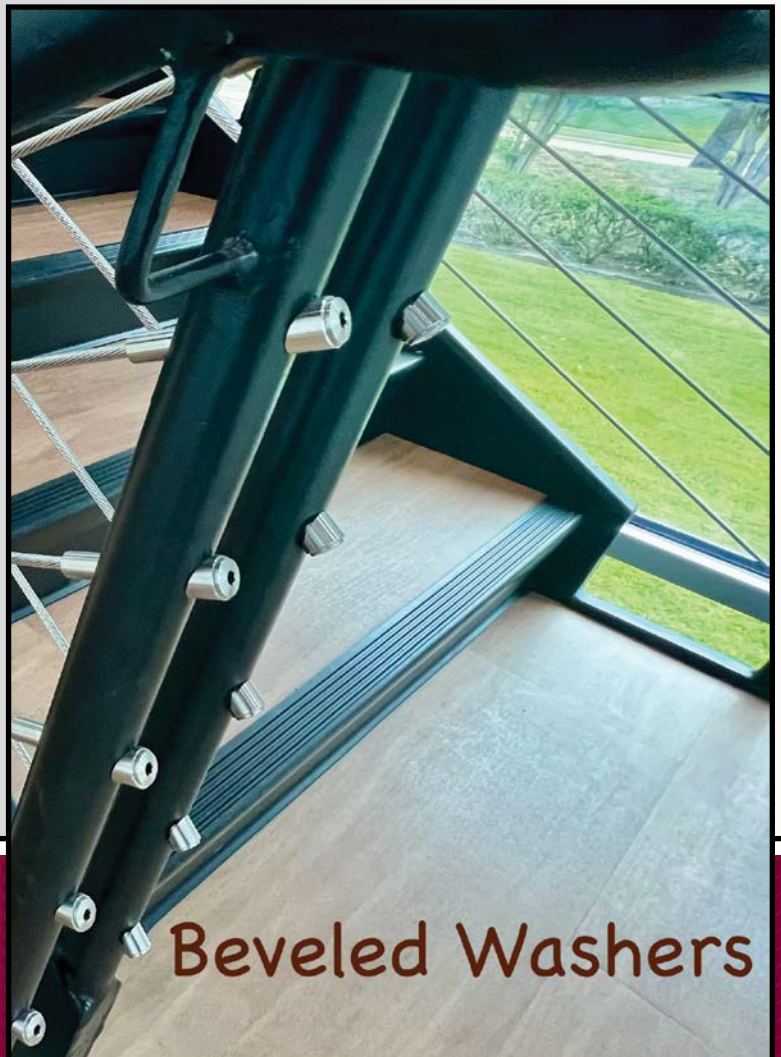
OD (A)	ID (B)	STAIR / SLOP PITCH	PART NO.
5/8"	1/4"	31°	14BC-BW
11/16"	5/16"	31°	516BC-BW
11/16"	3/8"	31°	38BC-BW



PRO LINE BEVELED WASHERS

USE WITH CABLE DIA.	STAIR / SLOP PITCH	OD (A)	ID (B)	PART NO.
1/8" or 3/16"	31°	0.49	0.319	316BC-PLBW

*NOTE: USE WITH PRO LINE CAPS ONLY

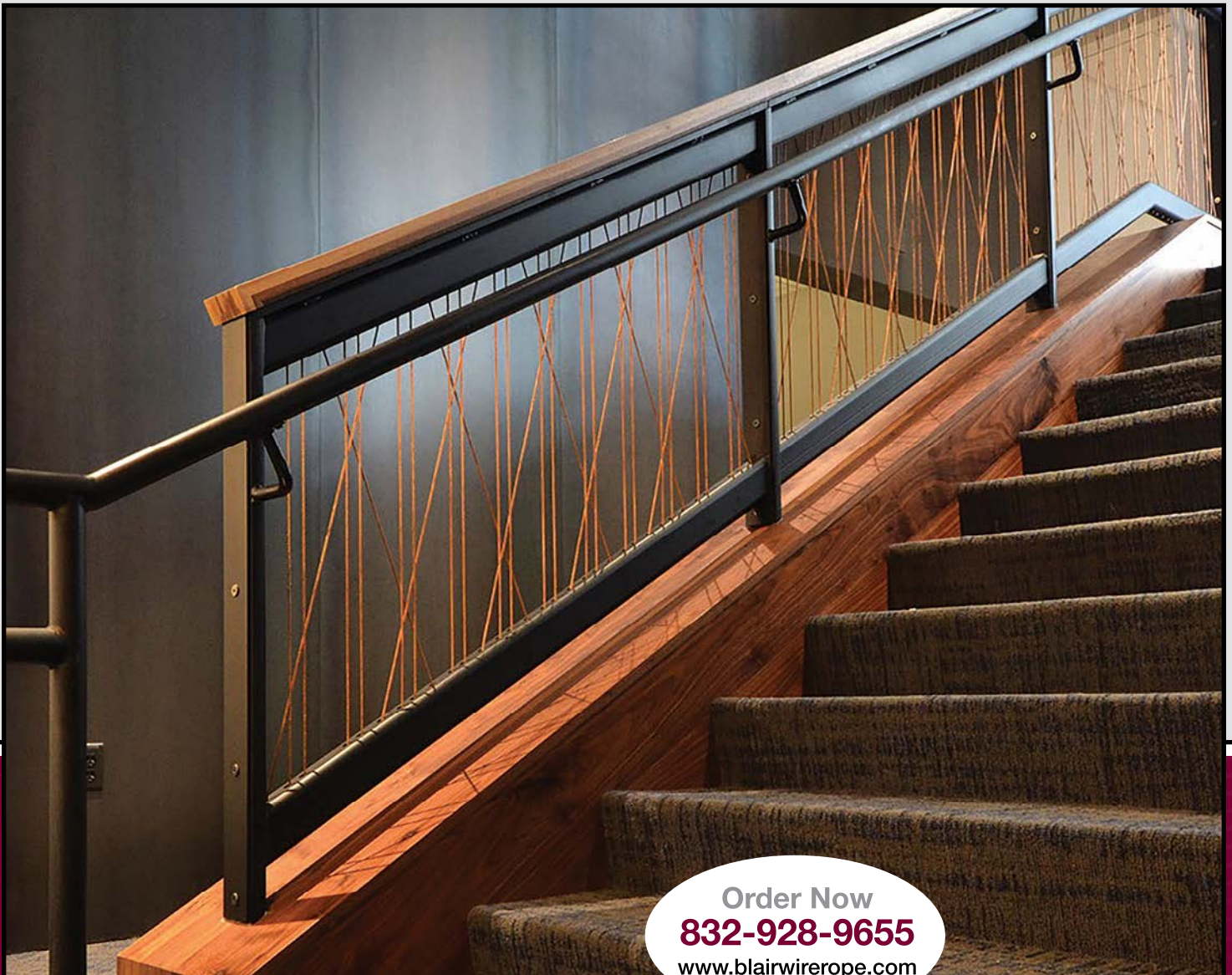
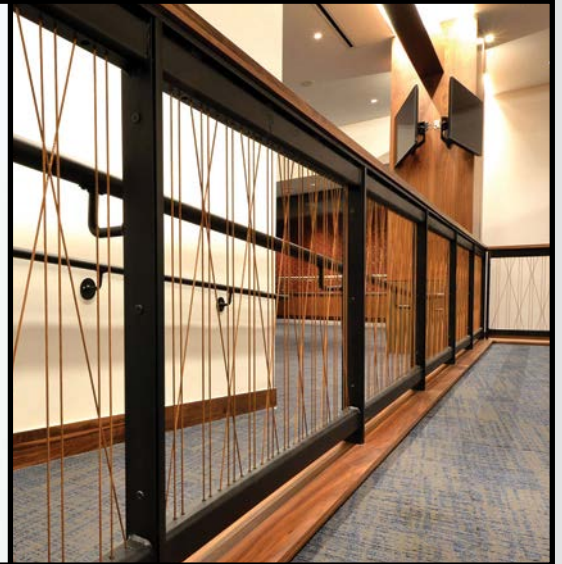


Beveled Washers

BRONZE CABLE

Blair Corporation offers Invisaware Receivers and related Bevel Washers in Phosphor Bronze.

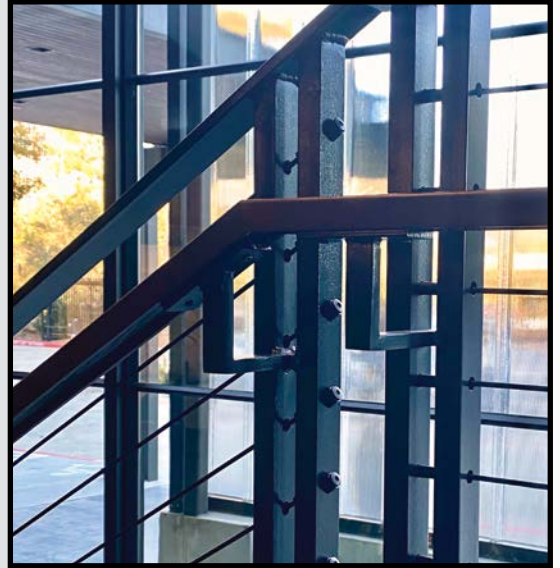
Bronze Cable
with
Bronze Invisaware Receivers



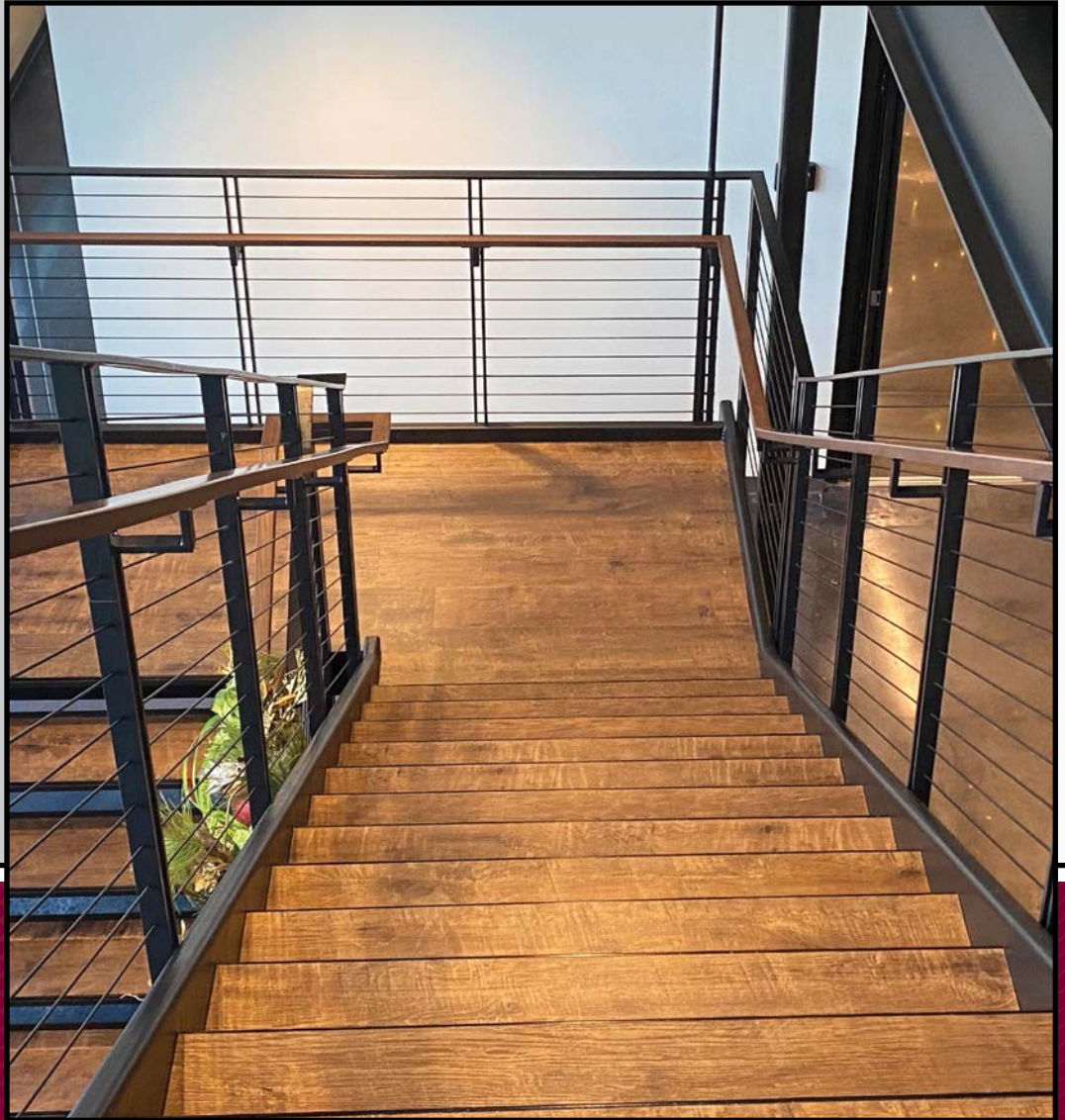
Order Now
832-928-9655
www.blairwirerope.com

BLACK OXIDE CABLE

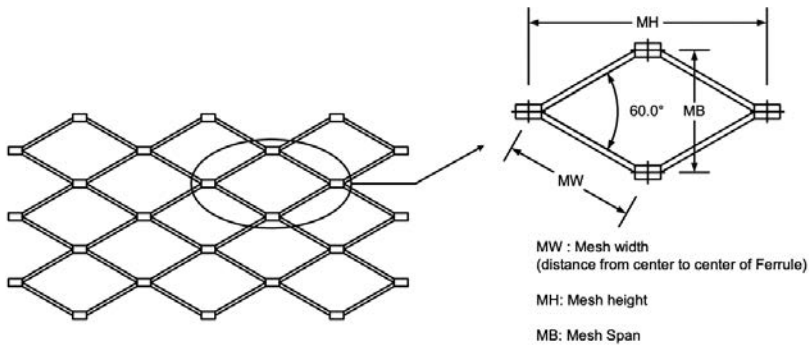
Stainless Steel Cable
with Invisiware Receivers
with Black Oxide Finish



Blair Corporation offers a Black Oxide Finish on Machined Swaged Termination Fittings for your cable rail project. Recommended to be used with Invisiware Receivers only.



WEBNET STAINLESS STEEL CABLE MESH

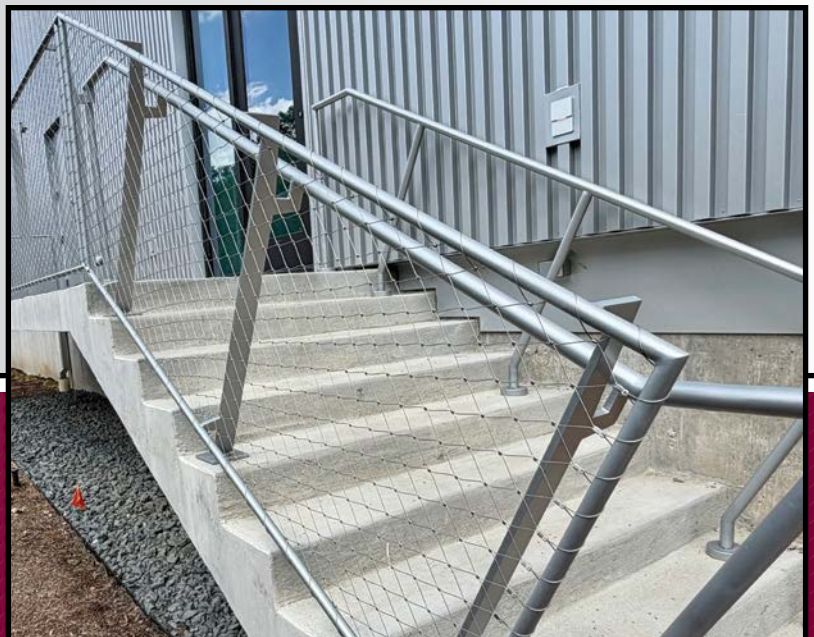
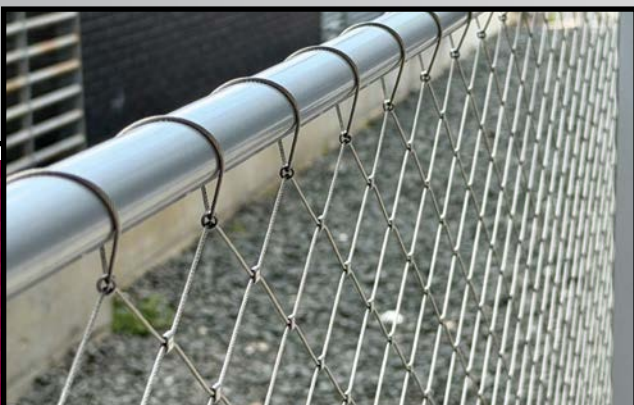
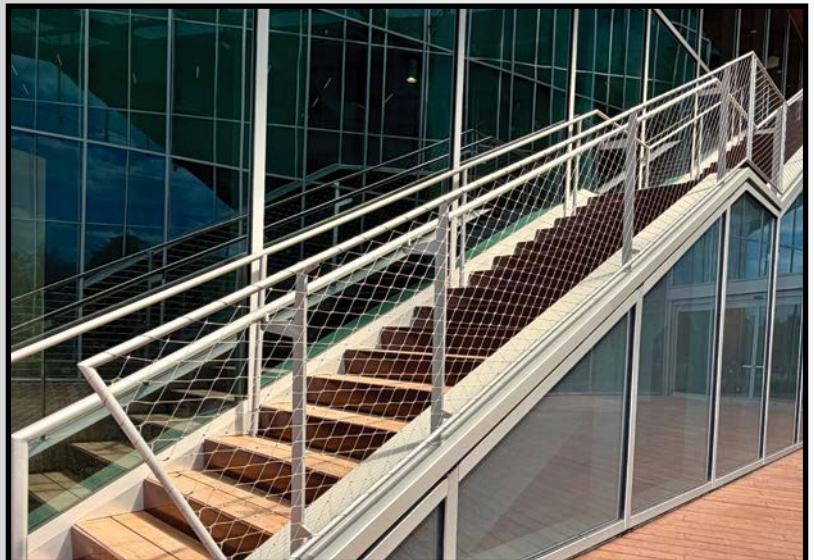
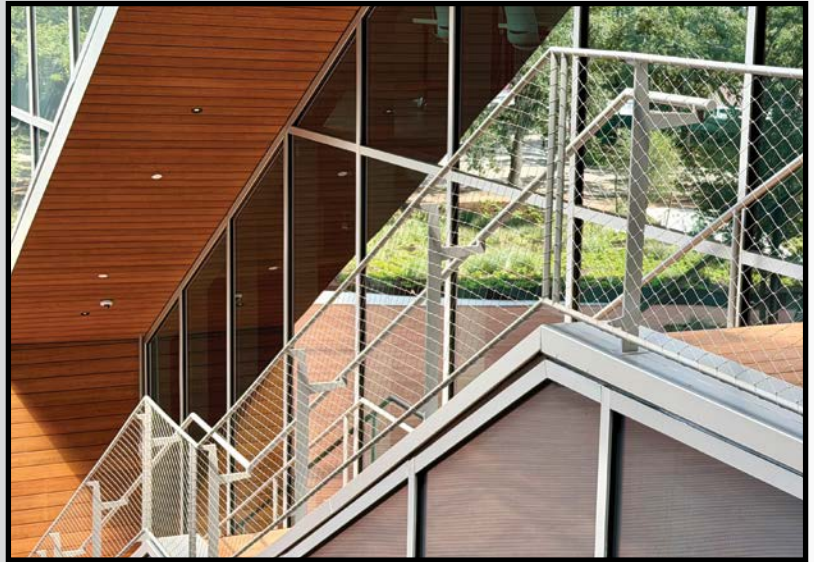


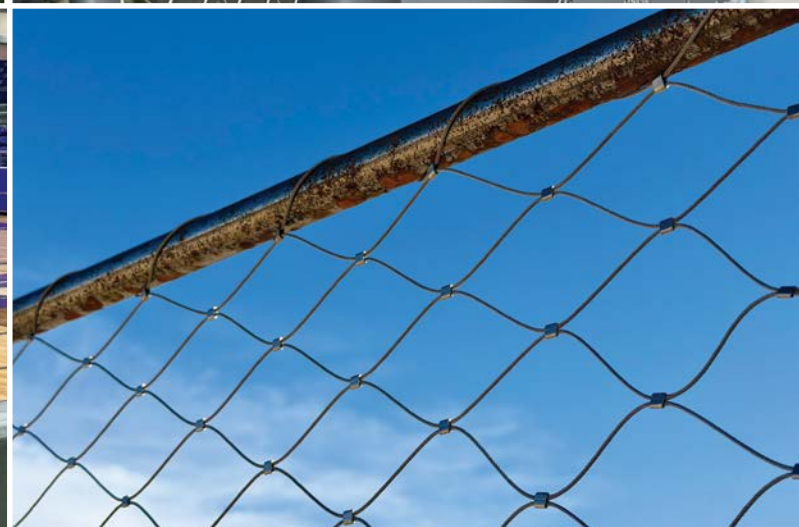
WEBNET STAINLESS STEEL CABLE MESH

CABLE DIAMETER	CONSTRUCTION	MESH WIDTH
1.0 MM	7x7 , 7 x 19	25-80 MM
1.5 MM	7x7 , 7 x 19	25-200 MM
2.0 MM	7x7 , 7 x 19	40-200 MM
3.0 MM	7x7 , 7 x 19	50-200 MM

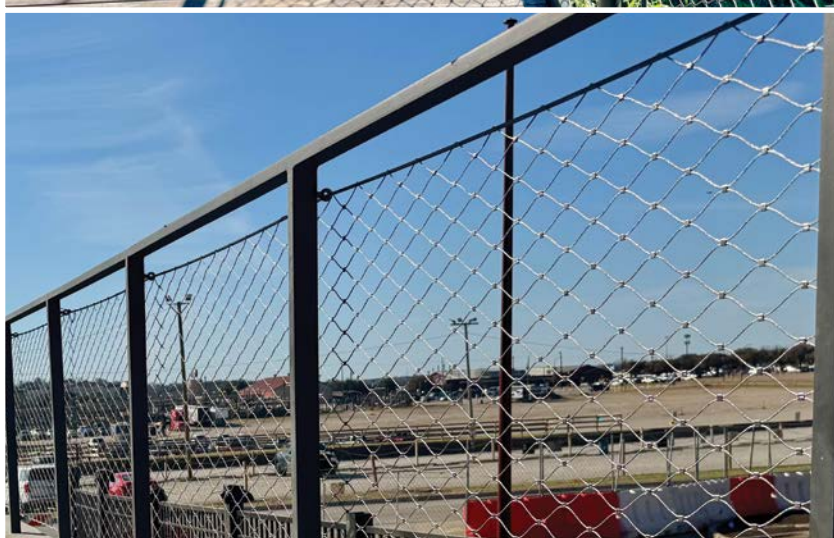
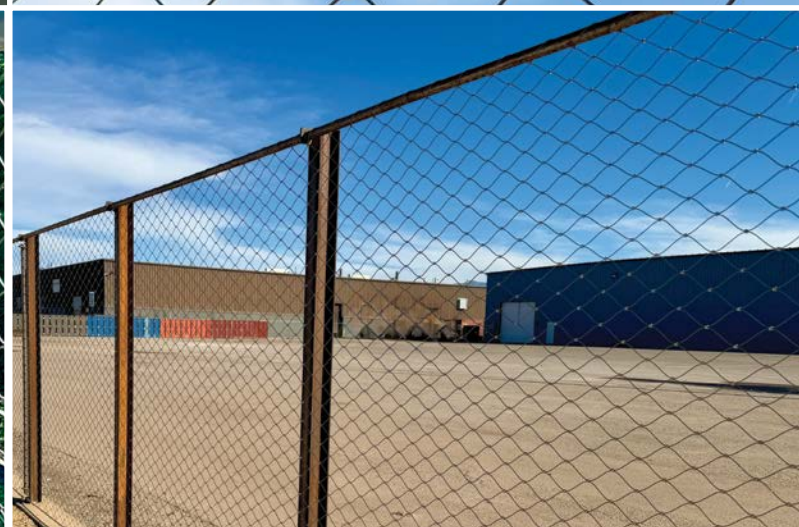


WEBNET STAINLESS STEEL CABLE MESH





Type 316
Stainless Steel
Cable WebNet
with
Black Oxide
Finish



Order Now
832-928-9655
www.blairwirerope.com

Blair Corporation
26797 Hanna Rd. BLD 2, Suite 2
Oak Ridge North TX 77385
Phone 832-928-9655 • Fax 480-275-3356
www.blairwirerope.com

TRELLIS



TRELLIS



Blair Corporation has a wide variety of Cable Trellis parts for your Green Wall or Cable Trellis Project.
Call 832-928-9655 or send inquiries to jack@theblaircompanies.com



Blair Corporation
26797 Hanna Rd. BLD 2, Suite 2 • Oak Ridge North TX 77385
Phone 832-928-9655 • Fax 480-275-3356
www.blairwirerope.com

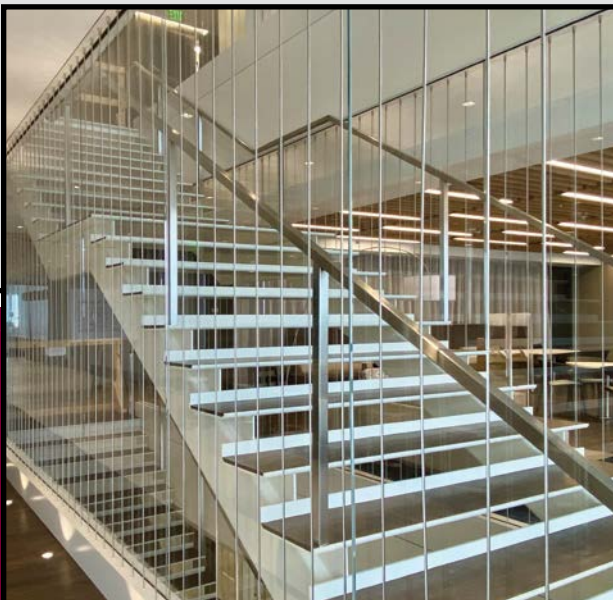
Order Now
832-928-9655
www.blairwirerope.com

TRELLIS



Blair Corporation
26797 Hanna Rd. BLD 2, Suite 2 • Oak Ridge North TX 77385
Phone 832-928-9655 • Fax 480-275-3356
www.blairwirerope.com

VERTICAL CABLES



Order Now
832-928-9655
www.blairwirerope.com

STAINLESS STEEL TENSION RODS



Structural Steel
Tension Rods

Marine Grade
Type 316
Stainless Steel

Order Now
832-928-9655
www.blairwirerope.com

FORK - 316 STAINLESS STEEL

PART NO.	ROD/ THREAD DIAMETER	PIN SIZE	LENGTH	JAW DEPTH	FORK OPENING
BC-AAF14L	1/4-28 LH	1/4"	1-13/16"	19/32"	1/4"
BC-AAF14R	1/4-28 RH	1/4"	1-13/16"	19/32"	1/4"
BC-AAF516L	5/16-24 LH	5/16"	2-3/8"	5/8"	5/16"
BC-AAF516R	5/16-24 RH	5/16"	2-3/8"	5/8"	5/16"
BC-AAF38L	3/8-24 LH	3/8"	3.0"	25/32"	3/8"
BC-AAF38R	3/8-24 RH	3/8"	3.0"	25/32"	3/8"
BC-AAF12L	1/2-20 LH	1/2"	4.0"	1-1/8"	1/2"
BC-AAF12R	1/2-20 RH	1/2"	4.0"	1-1/8"	1/2"
BC-AAF58L	5/8-18 LH	5/8"	4-3/4"	1-1/4"	5/8"
BC-AAF58R	5/8-18 RH	5/8"	4-3/4"	1-1/4"	5/8"
BC-AAF34L	3/4-16 LH	3/4"	5-3/8"	1-1/2"	3/4"
BC-AAF34R	3/4-16 RH	3/4"	5-3/8"	1-1/2"	3/4"
BC-AAF78L	7/8-14 LH	7/8"	6.0"	1-3/4"	7/8"
BC-AAF78R	7/8-14 RH	7/8"	6.0"	1-3/4"	7/8"
BC-AAF1L	1.0-12 LH	1.0"	6-7/8"	2.0"	1.0"
BC-AAF1R	1.0-12 RH	1.0"	6-7/8"	2.0"	1.0"

Blair Corporation

26797 Hanna Rd. BLD 2, Suite 2 • Oak Ridge North TX 77385

Phone 832-928-9655 • Fax 480-275-3356

www.blairwirerope.com

STAINLESS STEEL TENSION RODS

Architectural Nut Style



Conical Nut Style



FORK LOCK NUT - TRADITIONAL STYLE

PART NO.	ROD/ THREAD DIAMETER	OUTSIDE DIAMETER
BC-ALN14L	1/4-28 LH	3/8"
BC-ALN-14R	1/4-28 RH	3/8"
BC-ALN516L	5/16-24 LH	1/2"
BC-ALN516R	5/16-24 RH	1/2"
BC-ALN38L	3/8-24 LH	9/16"
BC-ALN38R	3/8-24 RH	9/16"
BC-ALN12L	1/2-20 LH	7/8"
BC-ALN12R	1/2-20 RH	7/8"
BC-ALN58L	5/8-18 LH	1-1/8"
BC-ALN58R	5/8-18 RH	1-1/8"
BC-ALN34L	3/4-16 LH	1-1/4"
BC-ALN34R	3/4-16 RH	1-1/4"
BC-ALN78L	7/8-14 LH	1-9/16"
BC-ALN78R	7/8-14 RH	1-9/16"
BC-ALN1L	1.0-12 LH	1-5/8"
BC-ALN1R	1.0-12 RH	1-5/8"

FORK CLEVIS PIN - DOUBLE HEADED

PIN DIA.	HEAD DIA.	LENGTH	PART NO.
1/4"	3/8"	5/8"	BC-ACP14A
5/16"	7/16"	3/4"	BC-ACP516A
3/8"	1/2"	7/8"	BC-ACP38A
1/2"	5/8"	1-1/4"	BC-ACP12A
5/8"	3/4"	1-1/4"	BC-ACP58A
3/4"	7/8"	2.0"	BC-ACP34A
7/8"	1.0"	2-1/4"	BC-ACP78A
1.0"	1-1/4"	2-1/2"	BC-ACP1A

Order Now

832-928-9655

www.blairwirerope.com

CUSTOM CABLE RAILING KITS & CABLE RAILING PARTS

Custom Cable Railing Kits

1/8, 3/16,
and 1/4
Cable



Pull Lock 1 end
to be done in the field,
no Swaging

Invisiware Receiver
& Swaging Stud 1 end

Cable Railing Kits

- Cable railing kits give the ability to install cables without the need of swaging equipment. Cable railing kits also give you the ability to be flexible on your dimensions of the cable.
- The cable railing kits come in 5-foot increment's with a swaging stud swaged on one side to be used with an Invisiware receiver for tensioning the cable once installed. The other end of the cable will be left open to have a pull lock on the other side, to be installed in the field.

Custom Cable Railing Kits

Custom cable railing kits are available upon request, using the tensioning device of your choice on one end of the cable. The other end of the cable will need a pull lock, push lock, or a swageless termination so it can be installed in the field without any swaging required. The Custom cable railing kits can be made to your desired length.

Custom Machined Cable Railing Parts

Blair Corporation offers custom machined cable railing parts.

Custom Cable Railing Parts



Custom Adjustable Swage Fork



Order Now
832-928-9655
www.blairwirerope.com

CABLE NETS

**Stainless Steel
Cable Nets**



Available in
3/16" & 1/4"
Diameter Cable

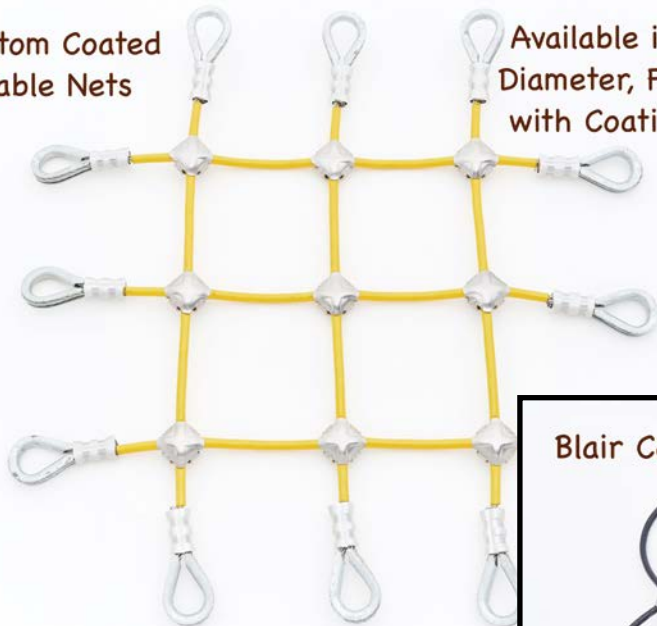
Custom Cable Nets

Blair Corporation offers custom cable nets in 3/16" and 1/4" diameter cable in limited lengths.

Optional coatings are available in 3/16" diameter cable nets, resulting in a final diameter of 1/4".

Cable nets have a wide variety of termination fittings.

**Custom Coated
Cable Nets**



Available in 3/16"
Diameter, Final OD
with Coating 1/4"

Blair Corporation Offers Custom Coated Cable Nets



Blair Corporation
26797 Hanna Rd. BLD 2, Suite 2
Oak Ridge North TX 77385
Phone 832-928-9655 • Fax 480-275-3356
www.blairwirerope.com

POST DRILLING CAPABILITIES

Cable Rail Post Hole Drilling



For Blair Corporation to drill the holes in your posts we need to have the individual posts delivered to our shop precut to length. We cannot run the posts through our machine if they have already been welded together to make the rail. We will also need detailed drawings of the posts to show the hole spacing, hole size, and the slope of the holes if at an angle. We can provide sample drawings at your request.

The max length of post we can drill is 10 feet as long as the last hole is more than 3" from the bottom of the post. We cannot perform mill work or make slotted holes with our machine.

We can drill up to 1-1/4" diameter holes and can drill and tap holes up to 9/16-18" depending on the wall thickness of the post.

The maximum post sizes are listed below:

- Square Tube: Up to 3" max
- Rectangle Tube: Up to 3" max
- Pipe Railing: Up to 2-1/2" max
- Angle Iron: Up to 3" x 3" max
- T Bar: Up to 3" x 3" max

Post Hole Tapping



Tapped Holes for your Termination Fittings



Order Now

832-928-9655

www.blairwirerope.com

Blair Corporation

26797 Hanna Rd. BLD 2, Suite 2 • Oak Ridge North TX 77385

Phone 832-928-9655 • Fax 480-275-3356

www.blairwirerope.com

CABLE RAIL POST HOLE DRILLING SERVICE

2 x 2
Square Tube
1/4 Wall

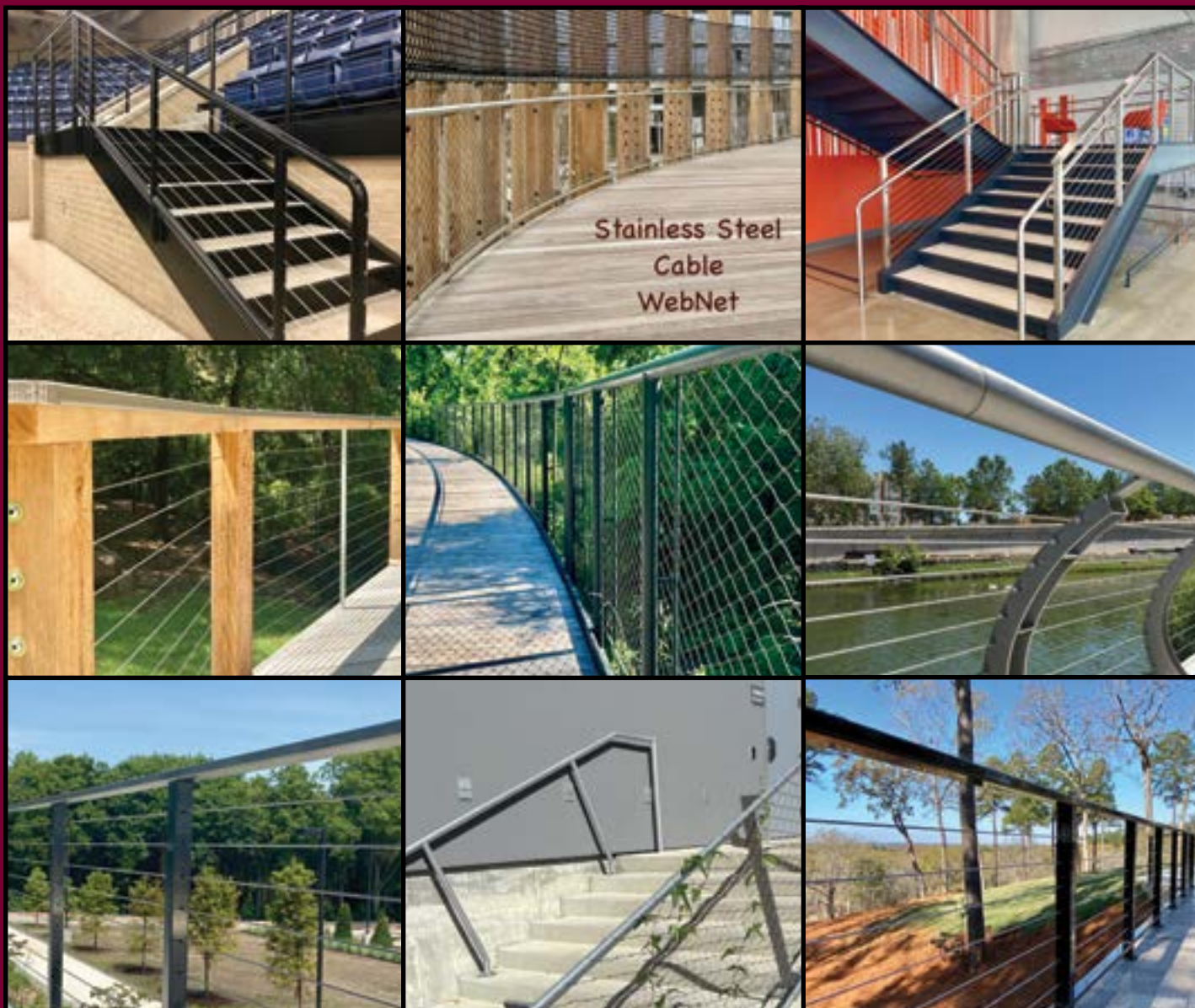


Angled
Holes



Schedule 80 Pipe





Blair Corporation has over 25 years of experience of providing Stainless Steel Cable and Related Hardware for Hand Rails. Contact us anytime at 832-928-9655.

Blair Corporation
 26797 Hanna Rd. BLD 2, Suite 2 • Oak Ridge North TX 77385
 Phone 832-928-9655 • Fax 480-275-3356
www.blairwirerope.com

Jack Blair
 Tanner Blair
 Adam Rowland

Jack@theblaircompanies.com
Tanner@theblaircompanies.com
adam@theblaircompanies.com